



MORGANVALE

Annual Production Sale

52 PERFORMANCE RECORDED
POLL HEREFORD BULLS



Tuesday 20th February, 2024 at 11.30am
Willalooka • South Australia

SELLING AGENTS



KEITH	Steve Doecke	Mobile 0427 817 323
ADELAIDE	Tony Wetherall	Mobile 0427 390 001
DUBBO	Paul Jameson	Mobile 0428 667 998
HAMILTON	Ross Milne	Mobile 0408 057 558
INVERELL	Lincoln McKinlay	Mobile 0419 239 963
GLEN INNES	Brian Kennedy	Mobile 0427 844 047
BROKEN HILL	Ben Finch	Mobile 0408 802 760



STRATHALBYN	Gordon Wood	Mobile 0408 813 215
STRATHALBYN	Andrew Wilson	Mobile 0439 354 228
DUBBO	John Settler	Mobile 0408 297 368
KEITH	Noel Evans	Mobile 0497 857 132
WODONGA	Peter Godbolt	Mobile 0457 591 929
NARACORTE	Richard Miller	Mobile 0428 849 327

REBATE

4% Rebate to outside Agents introducing buyers in writing 12 hours prior to Sale.

COVER PHOTO

LOT 1 MORGANVALE TUSCAN T051

Sire Mawarre Terminator Q274

MORGANVALE PASTORAL PTY LTD

ALLAN & HEATHER MORGAN

Ph/Fax 08 8757 8271

Mobile 0408 859 953 Email morganvale@activ8.net.au

ANNUAL PRODUCTION SALE

TUESDAY 20th FEBRUARY 2024 - SALE 11.30 AM

**52 PERFORMANCE RECORDED
POLL HEREFORD BULLS**

Field Day, Tuesday, 6th February, 2024



AT STUD YARDS
2243 RANGE ROAD
MORGANVALE, WILLALOOKA S.A.
PMB 45 KEITH 5267



www.morganvalebeef.com.au

SALE INFORMATION

Inspection

All cattle available for inspection from 9.30am on morning of sale, inspection can be arranged before hand by appointment.

Sale Format

The sale will be conducted as a video open auction sale – extra time prior to the sale in making selections is recommended.

Delivery

Free delivery provided it is coordinated by the vendor. While every care is taken no responsibility can be accepted whilst awaiting delivery.

Health

All Morganvale cattle are officially government confirmed as TB free, Brucellosis free. The property has a J-BAS score 6 for Bovine Johnes Disease. All cattle are EU accredited. Tested negative for Pestivirus. All Bulls have been semen tested in January 2024.

Accommodation

The vendors will be pleased to arrange accommodation in Keith, Bordertown or Naracoorte at the many and varied accommodation types available.

Insurance

Can be arranged for transit and/or periods up to 12 months.
Representation will be in attendance on sale day.

Rebate

A rebate of 4% will be allowed by the vendors to interstate agents (other than interstate representatives of selling agents) and South Australian Associated agents on any purchase they influence, provided that they advise the selling agent in writing and make settlement giving the names of the purchasers not later than twelve (12) hours prior to the sale.

Disclaimer

The owners, employees, sale staff and representatives accept no liability for accidents that occur. Any person attending does so at their own risk.

Morganvale Welcome

you to their On-Property Bull Sale

We take this opportunity to invite you to our 18th annual on-property sale. We appreciate the support from past and new clients over the past seventeen sales with your purchases and positive comments. The sale will be held at the Stud Yards at Morganvale once again. The format of video auction will be used once again, in keeping to make our sale easily accessible AuctionsPlus will be available for purchasers unable to attend or wishing to follow the sale.

Whilst the past year has been a roller coaster the fundamentals have remained – a high demand for our red meat, with a main stream media hysteria for climate change / variation and the current political unease it is important to focus on producing a premium product.

This year's Poll Hereford sale draft features progeny from 8 sires used in 2021. These bulls show the consistency of type we are now seeing from our dedicated breeding goals. The large sire battery ensures there is enough variance of type to be able to satisfy producers with different breeding objectives – self replacing herds to terminal herds. The offering shows increased uniformity as heifers join the breeding herd from our disciplined breeding program.

The sale bulls feature the first sons from Mawarra Terminator Q274 a consistent sire of high growth, thick carcass, maternal progeny. Wirruna Qanit Q069 is a low birth, high maternal and carcass sire (a sleep easy heifer joining sire) and Morganvale Quash Q289 – a bull who drives all the profit traits with the progeny sure to impress. They join proven sires in Morganvale Palmer, Mt Difficult Kearney, Wirruna Perry, National and Melville. They all breed the carcass traits we are striving for plus maintaining the bred traits Poll Herefords are noted for. We believe these sires give clients a variation in type and blood lines but also consistency and profitability.

We are pleased with this year's draft, the cattle are showing the profit making traits we are striving to breed into them – ease of doing, early growth and the ability to meet market specifications with high MSA scores.

We look forward to presenting these cattle to you at our field day and on sale day.

If we can assist in any way please don't hesitate to contact us.

We hope you enjoy browsing this catalogue and are sure you will enjoy inspecting the cattle in person even more.

Allan & Heather Morgan

BREEDPLAN EXPLANATION

EBV's are provided for the following traits...

SS	Scrotal size is an indicator of male fertility in regards to semen quality and quantity. SS is also positively associated with female fertility.
Birth Weight	The lower the birthweight EBV, the lighter is the birthweight potential of the progeny.
Genetic Milk	Reflects extra calf weight at weaning due to the genetic influence a sire has on his daughters milking and mothering ability.
200 Day Weight	Indicates the relative weight advantage of a sire at 8-10 months of age.
400 Day Weight	Indicates the relative weight advantage of a sire at yearling age.
600 Day Weight	The best single estimate of an animals genetic merit for growth beyond yearling age.
MWT	Mature Cow Weight is an estimate of the genetic difference in cow weight at 5 years of age.
CWT	Estimates the genetic difference in carcass weight and is adjusted to 650 days of age.
Fat Depth	Bulls with negative (-) EBV's for this trait are expected to produce relatively leaner progeny than bulls with positive (+) EBV's.
EMA	Bulls with positive (+) EBV's for this trait are expected to produce more muscular progeny than bulls with negative (-) EBV's.
Retail Beef Yield	Bulls with larger EBV's are expected to produce progeny with higher yielding carcasses.
Intramuscular Fat %	Positive EBV's indicate likelihood of more intramuscular fat.
Accuracies	The accuracy provides a measure of the reliability of the EBV. The higher the value, the less likelihood of the EBV changing with the addition of more performance records on the animal.
Selection Indexes	An index ranks an animal for single production goal - profit. They take the hard work out of knowing how much emphasis to give each of the available growth, maternal, carcass and fertility EBV's when selecting parent animals. An index is a composite EBV of traits best suited to a particular production system and target market.

There are currently four different selection indexes calculated for Australian Hereford animals. These are: Southern Self-Replacing Index; Southern Baldy Maternal Index; Northern Self-Replacing Index; Northern Baldy Terminal Index. Each selection index describes a different production/market scenario and relates to a typical commercial herd using Hereford bulls. Producers are advised to use the selection index that most closely aligns to their production system. All four selection indexes are focussed on maintaining and improving eating quality. Significant premiums are applied for increasing marble score up to a marble score of 3. Pressure is also applied to early life growth to maintain low ossification scores and good MSA compliance. In addition, each selection index targets the following specifications.

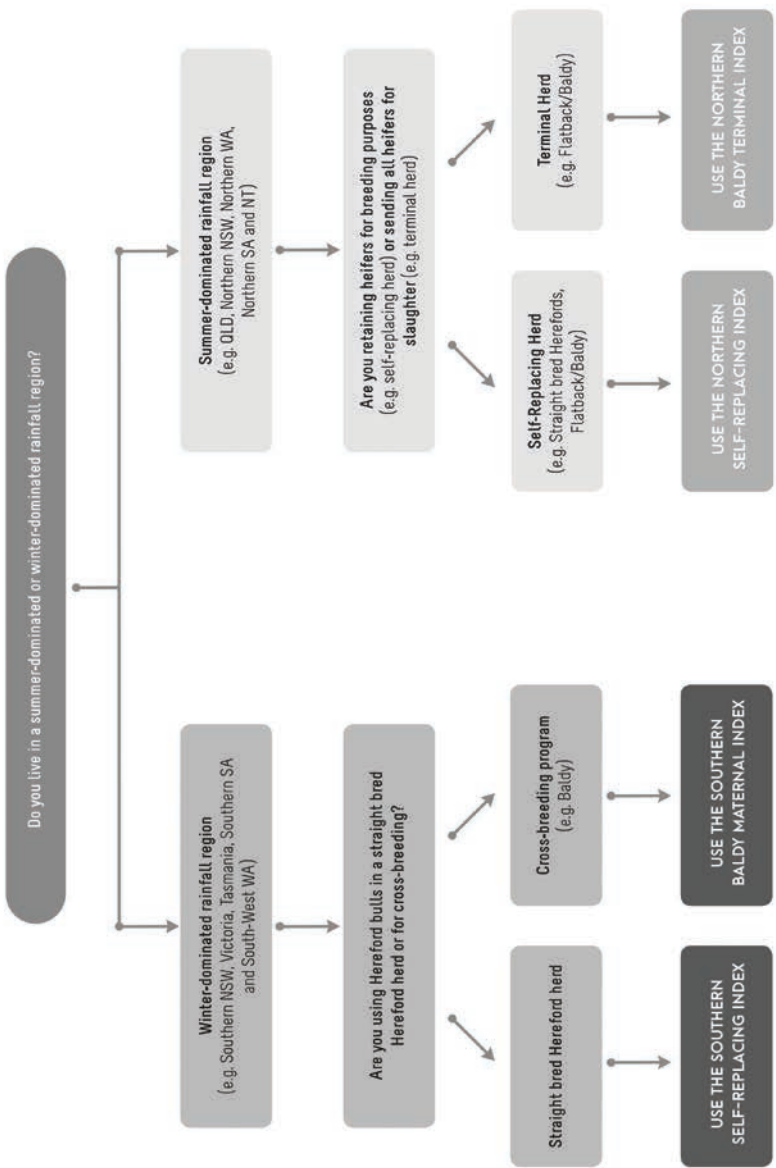
Southern Self-Replacing Index: Estimates the genetic differences between animals in net profitability per cow joined in a commercial self-replacing straight bred Hereford herd targeting the domestic market. Daughters are retained for breeding and so maternal traits are of importance. Steers are slaughtered at 20 to 22 months of age to produce 300 kg carcasses with 10 mm P8 fat depth. A moderate cost is applied for cow feed costs during the annual feed shortage period.

Northern Self-Replacing Index: Estimates the genetic differences between animals in net profitability per cow joined in a commercial self-replacing herd targeting the domestic market. This index is suitable for use by both straight bred Hereford herds and in crossbreeding programs where Hereford bulls are being used over a Bos indicus based cow herd (e.g. flatback). Daughters are retained for breeding and so maternal traits are of importance. Steers are slaughtered at 20 to 22 months of age to produce 340 kg carcasses with 12 mm P8 fat depth. A high cost is applied for cow feed costs during the annual feed shortage period.

Southern Baldy Maternal Index: Estimates the genetic differences between animals in net profitability per cow joined in a commercial crossbred herd using Hereford bulls over Bos taurus females (e.g. Angus). A portion of the heifers are retained for breeding and so maternal traits are of importance. The steers and surplus heifers are destined for slaughter at 20 to 22 months of age. Steers produce 300 kg carcasses with 10 mm of P8 fat depth, while heifers produce 270 kg carcasses with 12 mm of P8 fat depth. A moderate cost is applied for cow feed costs during the annual feed shortage period.

Northern Baldy Terminal Index: Estimates the genetic differences between animals in net profitability per cow joined in a commercial crossbred herd (e.g. flatback) using Hereford bulls over Bos indicus/Tropical females (e.g. Santa Gertrudis) where all progeny (male and female) are destined for slaughter. Steers and heifers are slaughtered at 20 to 22 months of age. Steers produce 340 kg carcasses with 14 mm of P8 fat depth while heifers produce 300 kg carcasses with 17 mm of P8 fat depth.

WHICH INDEX SHOULD I USE?



Breed averages for 2022 drop calves	DIR	Birth Wt	200 Wt	400 Wt	600 Wt	MWT	Cwt	MILK
	+2.6	+3.9	+34	+56	+79	+66	+52	+17
	SCROTAL	EMA	RIB FAT	RUMP FAT	RBY%	IMF%		
	+2.1	+3.9	+0.8	+1.0	+0.8	+0.6		
	SSR	NSR	SBM	NBT				
+\$136	+\$123	+\$139	+\$102					



Can't make the sale?

Register in just seven easy steps and log onto AuctionsPlus to bid from anywhere on your phone, tablet or desktop.

1

REGISTER ONLINE

FREE once off registration for all auctions.

2

VIEW CATALOGUE

Stock history, photos, videos, pedigrees and more .

3

LIMIT BID

Can't make the auction? Set your maximum bid prior to auction and let the system bid for you.

4

ENTER AUCTION

Log into the auction anytime, anywhere and bid on your mobile, tablet or computer.

5

CONTACT SELLER

Contact selling agent to arrange payment and delivery.

6

PAYMENT

Via the selling agent's terms and conditions.

7

DELIVERY

Arrange transport of livestock at your expense.

**Contact AuctionsPlus on (02) 9262 4222
www.auctionsplus.com.au**

REFERENCE SIRES

DECEMBER 2023 GROUP BREEDPLAN EBVS																
NAME/ID	CE	BW	200	400	600	MILK	SS	EMA	RIB	Rump	RBY	IMF	SSR	NSR	SBM	NBT
MAWARA TERMINATOR Q274	+2.0	+5.9	+43	+72	+102	+22	+1.1	+7.6	+1.7	+1.6	+1.0	+1.1	+183	+165	+188	+131
WIRRUNA PERRY WNA P150	-5.5	+8.4	+53	+87	+124	+21	+6.1	+5.9	-.4	-.9	+1.8	+1.5	+193	+169	+172	+123
WIRRUNA NATIONAL N322	+8.4	+3.9	+42	+71	+93	+21	+1.7	+14.3	+1.3	+1.5	+3.9	+2.3	+232	+235	+244	+181
WIRRUNA QANIT Q069	+13.1	-0.5	+28	+48	+63	+27	+3.1	+7.2	+2.6	+3.5	+1.1	+1.0	+192	+195	+205	+146
MORGANVALE PALMER P061	+2.7	+5.4	+41	+74	+108	+11	+1.8	+6.1	+1.5	+2.4	+2.0	+0.4	+204	+199	+208	+143
MORGANVALE QUASH Q289	-2.1	+6.6	+47	+75	+106	+20	+2.8	+5.3	+0.5	+0.6	+1.2	+1.3	+176	+155	+168	+117
MOUNT DIFFICULT KEARNEY K18	+12.4	+2.6	+37	+64	+79	+17	+3.6	+2.8	+2.0	+2.6	-0.6	+0.1	+166	+157	+185	+137
YAVENVALE NIAGRA N285	+2.1	+4.9	+39	+59	+79	+25	+4.0	+6.2	+0.4	-0.3	+2.3	+1.0	+176	+159	+169	+113
WIRRUNA MELVILLE M243	+13.0	-0.1	+34	+50	+60	+36	+2.2	+5.5	+1.4	+0.9	+0.8	+2.0	+180	+163	+205	+144
HEREFORD BREEDPLAN AV	+2.8	+3.9	+34	+56	+79	+17	+2.1	+3.9	+0.8	+1.0	+0.8	+0.6	+136	+123	+139	+102

BREEDING OBJECTIVES

Morganvale's breeding objective is to breed bulls that are fully described and have genetics and physical ability to meet market specifications and client's breeding objectives. A balance is required where the herd is self replacing with a high fertility and efficiency of the female portion being critical.

Strategies to achieve this objective

- All cattle run under commercial conditions
- A moderate birth weight with optimum growth, carcase quality and muscularity that meet market specifications
- Performance test to accurately describe the cattle genetic merit whilst maintaining structural soundness.

PERFORMANCE POINTERS \$ INDEX

These indexes are designed to allow balanced selection for various market end points. This technology applies various weightings to the potential 17 EBV's now available to give a single value for an animal to your breeding objective in dollar terms. They rank animals for a simple goal - **profit**.

They apportion the amount of selection pressure that needs to be applied for growth, maternal, carcase and fertility traits to give you the most profitable herd. High indexing animals will rarely have the highest EBV for any single trait. The weightings depend on the economic importance of traits and for antagonisms between traits.

BIRTH WEIGHT: BULLS FOR YOUR HEIFER PROGRAM-H

At Morganvale we weigh and record all calves at birth. You will notice that a number of sires marked with an H, this indicates we consider this sire suitable for a heifer joining program. This came from not only a structural observation but a Breedplan EBV and natural birth weight that incorporates all of the sire's contemporaries. Many other studs in our industry don't weigh calves. They claim a bull with a low performance (600 day growth) will also have a low birth weight – this is not the case. We strive for low to moderate birth and increased growth weights.

For an overview of the Breedplan EBV performance see page 5.

COMPARING BULLS

The logic of genetic improvement is that selection decisions are based on differences – in reality it is not how different bulls appear to be but how different their progeny will be that is important.

How you measure the differences dictates how much genetic improvement you make

- Visual Assessment - tells you what you think is there
- Scans - tell you what is there, but not how it got there
- EBV's - tell you how much of what's there will be passed onto the progeny.

DECEMBER 2023 HEREFORD GROUP BREEDPLAN PERCENTILE TABLE

Percentile bands for all 2021 born animals

Percentile Band	Calving Ease DIR (%)	Calving Ease DTRS (%)	Gestation Length (days)	Birth Wt. (kg)	200 Day Wt. (kg)	400 Day Wt. (kg)	600 Day Wt. (kg)	Mat Cow Wt. (kg)	Milk (kg)	Scrotal Size (cm)	Days to Calving (days)	Carcass Wt (kg)	Eye Muscle Area (sq cm)	Rib Fat (mm)	Rump Fat (mm)	Retail Beef Yield (%)	IMF (%)	Total Docility	SSR Index (\$)	NSR Index (\$)	SBM Index (\$)	NBT Index (\$)	NFI-F (kg/day)
Top Value	+15.2	+12.7	-14.4	-5.2	+65	+107	+156	+161	+38	+6.6	-10.8	+103	+12.2	+5.6	+7.7	+4.4	+4.5	+53	+275	+253	+271	+203	-0.77
Top 1%	+12.4	+9.5	-6.9	-1.7	+50	+84	+119	+115	+28	+4.5	-6.7	+80	+7.7	+2.7	+3.9	+2.1	+2.5	+46	+222	+209	+227	+166	-0.38
Top 5%	+10.3	+7.4	-4.3	+0.1	+45	+75	+106	+100	+25	+3.7	-5.6	+71	+6.4	+2.1	+3.0	+2.1	+1.8	+42	+195	+185	+205	+150	-0.21
Top 10%	+9.0	+6.4	-3.2	+0.9	+42	+71	+100	+93	+23	+3.3	-5.1	+67	+5.8	+1.8	+2.5	+1.8	+1.5	+39	+183	+172	+192	+141	-0.16
Top 15%	+8.0	+5.7	-2.6	+1.6	+41	+68	+96	+88	+22	+3.0	-4.7	+64	+5.4	+1.7	+2.2	+1.6	+1.3	+37	+174	+163	+183	+134	-0.12
Top 20%	+7.1	+5.1	-2.2	+2.1	+40	+66	+93	+84	+21	+2.8	-4.5	+62	+5.1	+1.5	+2.0	+1.4	+1.1	+36	+168	+155	+175	+128	-0.08
Top 25%	+6.3	+4.6	-1.8	+2.4	+38	+64	+90	+80	+20	+2.7	-4.2	+60	+4.8	+1.4	+1.8	+1.3	+1.0	+35	+161	+149	+168	+123	-0.05
Top 30%	+5.6	+4.1	-1.5	+2.8	+37	+62	+88	+77	+20	+2.5	-4.0	+58	+4.6	+1.2	+1.6	+1.2	+0.9	+33	+156	+143	+162	+119	-0.03
Top 35%	+4.9	+3.7	-1.3	+3.1	+36	+61	+86	+75	+19	+2.4	-3.8	+57	+4.4	+1.1	+1.5	+1.1	+0.8	+32	+151	+138	+156	+114	-0.02
Top 40%	+4.2	+3.2	-1.0	+3.4	+36	+59	+83	+72	+18	+2.3	-3.5	+55	+4.2	+1.0	+1.3	+1.0	+0.7	+31	+146	+132	+150	+110	+0.00
Top 45%	+3.6	+2.8	-0.8	+3.7	+35	+58	+81	+69	+18	+2.2	-3.3	+54	+4.0	+0.9	+1.2	+0.9	+0.7	+30	+141	+127	+144	+106	+0.01
Top 50%	+2.9	+2.4	-0.6	+4.0	+34	+56	+79	+67	+17	+2.1	-3.1	+52	+3.8	+0.8	+1.0	+0.8	+0.6	+28	+136	+122	+139	+102	+0.02
Top 55%	+2.2	+2.0	-0.4	+4.3	+33	+55	+77	+64	+16	+2.0	-2.9	+51	+3.6	+0.7	+0.9	+0.7	+0.5	+27	+132	+117	+133	+98	+0.03
Top 60%	+1.6	+1.6	-0.2	+4.6	+32	+53	+75	+61	+16	+1.9	-2.7	+49	+3.5	+0.6	+0.7	+0.6	+0.4	+26	+127	+112	+128	+94	+0.04
Top 65%	+0.9	+1.1	+0.1	+4.9	+31	+52	+72	+59	+15	+1.8	-2.5	+48	+3.3	+0.5	+0.6	+0.5	+0.4	+25	+122	+107	+123	+90	+0.05
Top 70%	+0.2	+0.7	+0.3	+5.2	+30	+50	+70	+56	+15	+1.7	-2.3	+46	+3.1	+0.4	+0.4	+0.4	+0.3	+23	+117	+102	+117	+86	+0.06
Top 75%	-0.5	+0.2	+0.5	+5.5	+29	+49	+67	+52	+14	+1.6	-2.0	+45	+3.0	+0.3	+0.2	+0.2	+0.2	+22	+111	+97	+111	+82	+0.07
Top 80%	-1.4	-0.3	+0.8	+5.8	+28	+47	+65	+49	+13	+1.4	-1.7	+43	+2.8	+0.1	+0.0	+0.1	+0.1	+20	+105	+90	+105	+77	+0.09
Top 85%	-2.3	-0.9	+1.1	+6.2	+26	+44	+61	+45	+12	+1.3	-1.4	+41	+2.5	+0.0	-0.2	+0.0	+0.0	+18	+98	+84	+97	+72	+0.10
Top 90%	-3.4	-1.6	+1.6	+6.7	+24	+41	+57	+39	+11	+1.1	-1.0	+38	+2.3	-0.3	-0.5	-0.2	-0.2	+15	+90	+75	+88	+65	+0.12
Top 95%	-5.2	-2.8	+2.2	+7.3	+21	+37	+50	+31	+9	+0.8	-0.5	+33	+1.9	-0.6	-0.9	-0.4	-0.4	+10	+78	+63	+75	+55	+0.17
Top 99%	-9.2	-5.3	+4.1	+8.7	+16	+27	+34	+11	+6	+0.2	+0.4	+24	+1.2	-1.2	-1.9	-1.0	-0.8	-2	+49	+40	+44	+33	+0.28
Low Value	-23.0	-18.8	+8.6	+13.8	-14	-33	-49	-52	-1	-1.6	+3.0	-29	-1.7	-3.0	-5.4	-2.7	-2.0	-12	-25	-14	-22	-22	+0.56

Use this table as a guide to compare individual animals with the current genetic level of the Hereford breed.

1

MORGANVALE TUSCAN T51 (AI) (PP) WLM T051

Date of Birth 24/04/2022

KCF BENNETT ENCORE Z311 (ET) (P)
 NJW 79Z Z311 ENDURE 173D (IMP USA) (ET) (PP)
 BW 91H 100W RITA 79Z (ET) (P)

SIRE: MAWARRA TERMINATOR Q274 (AI) (PP)

CLOVERLEE HUNTER (PP)

MAWARRA MISS TITANIA 054 (AI) (ET) (P)

MAWARRA MISS TITANIA 023 (AI) (P)

REMITALL ALLIANCE 503W (IMP CAN) (P)
 MORGANVALE ALLIANCE G294 (AI) (P)
 MORGANVALE LYDIA B90 (P)

DAM: MORGANVALE LADY NATALIE K152 (P)

MORGANVALE CAPTAIN C196 (P)

MORGANVALE LADY NATALIE F264 (P)

MORGANVALE LYDIA D95 (P)

DECEMBER 2023 GROUP BREEDPLAN EBVS

	CED DIR	CED DTRS	GL	BIRTH WT	200 WT	400 WT	600 WT	MCW	MARKET INDEX VALUES
EBV	-2.1	+3.8	+3.1	+7.8	+44	+70	+95	+68	
ACC%	43%	31%	73%	73%	68%	66%	66%	56%	
	MILK	SCROTAL	CWT	EMA	RIB FAT	RUMP FAT	RBV%	IMF%	SSR
EBV	+19	+2.1	+63	+6.6	+0.5	+0.2	+1.9	+0.4	+\$157
ACC%	53%	65%	53%	45%	49%	52%	43%	49%	NSR

EYE PIGMENTATION: **100/100**SCROTAL CIRCUMFERENCE: **41**

NOTES: Leading this year's draft, Tuscan by Mawarra Terminator is an up standing sire with a good sire's outlook, length and a high weight gain. From a consistent breeder. Top 5% EMA, top 10% 200 day Top 15% 4 & 600 day growth. Typical of the impact the Terminator is having across the breed.

PURCHASER:**\$****+\$138**SBM
+\$153NBT
+\$102

2

MORGANVALE TARANTO Y93 (PP) WLM T093

Date of Birth 08/05/2022

MORGANVALE FILLMORE (PP)
 MORGANVALE LARKIN (PP)
 MORGANVALE STATUESQUE G343 (P)

SIRE: MORGANVALE PALMER (AI) (PP)

CLOVERLEE HOTSHOT (P)

MORGANVALE LADY ALMOND K209 (P)

MORGANVALE LADY ALMOND G209 (P)

WIRRUNA FORT F382 (ET) (PP)
 WIRRUNA HOT STUFF H356 (P)
 WIRRUNA GOLDEN VANITY F378 (ET) (P)

DAM: MORGANVALE LADY LYDIA P334 (P)

MORGANVALE CLASSIC (P)

MORGANVALE LADY LYDIA F363 (P)

MORGANVALE LADY LYDIA C43 (P)

DECEMBER 2023 GROUP BREEDPLAN EBVS

	CED DIR	CED DTRS	GL	BIRTH WT	200 WT	400 WT	600 WT	MCW	MARKET INDEX VALUES
EBV	+1.0	+1.6	-4.2	+1.9	+33	+57	+81	+51	
ACC%	41%	32%	58%	73%	68%	67%	70%	60%	
	MILK	SCROTAL	CWT	EMA	RIB FAT	RUMP FAT	RBV%	IMF%	SSR
EBV	+16	+1.8	+65	+6.8	+1.6	+2.8	+1.9	+1.0	+\$166
ACC%	54%	76%	56%	47%	50%	54%	48%	49%	NSR

EYE PIGMENTATION: **100/100**SCROTAL CIRCUMFERENCE: **40**

NOTES: First of Morganvale Palmer progeny in this draft who has bred length, spring of rib & depth into his calves with a soft cherry hair type with a well hooded eye set. A curve bending set of EBVs for CE, BWT & growth. High carcass values – top 5% EMA, top 10% rump.

PURCHASER:**\$****+\$166**SBM
+\$166NBT
+\$117

3

MORGANVALE TENBY T55 (PP) WLM T055

Date of Birth 26/04/2022

NITHDALE JACKAL 090029 (P)
 ORARI GORGE MISCHIEF 120083 (IMP NZL) (P)
 NITHDALE LESLIE 090020 (P)

WIRRUNA KALIMNA K326 (PP)
 YAVENVALE NIAGARA N285 (AI) (PP)
 YAVENVALE LADY MARY L482 (AI) (P)

SIRE: WIRRUNA QANIT Q069 (AI) (PP)**DAM: MORGANVALE VANITY R170 (P)**

KCF BENNETT REVOLUTION X51 (IMP USA) (P)
 WIRRUNA MADAM L14 (ET) (PP)
 WIRRUNA MADAM F18 (AI) (P)

MOUNT DIFFICULT KEARNEY K18 (PP)
 MORGANVALE VANITY N011 (P)
 MORGANVALE VANITY K359 (P)

DECEMBER 2023 GROUP BREEDPLAN EBVS

	CED DIR	CED DTRS	GL	BIRTH WT	200 WT	400 WT	600 WT	MCW	MARKET INDEX VALUES
EBV	+9.6	+4.8	-4.6	+3.3	+42	+69	+95	+68	
ACC%	41%	32%	58%	73%	68%	66%	69%	59%	
	MILK	SCROTAL	CWT	EMA	RIB FAT	RUMP FAT	RBY%	IMF%	NSR +\$206
EBV	+22	+4.1	+75	+7.3	+1.6	+1.8	+1.8	+0.5	
ACC%	52%	75%	55%	46%	49%	53%	46%	48%	

EYE PIGMENTATION: **100/100**SCROTAL CIRCUMFERENCE: **43**

NOTES: Tenby is the first son of Wirruna Qanit Q069 offered here – a trait leading calving ease of +13.1 which is showing in all of his progeny. Not only does Tenby have the data spread but is matched by his physical presence. Top 5% GL, SS, EMA & SSR, NSR, SBM & NBT EBVs. Suitable for heifer joining [H].

PURCHASER:**\$**SBM
+\$223NBT
+\$160

4

MORGANVALE TOBY T78 (AI) (PP) WLM T078

Date of Birth 06/05/2022

ALLENDALE ANZAC E114 (PP)
 WIRRUNA LEDGER L285 (AI) (PP)
 WIRRUNA DOREEN G115 (AI) (P)

WIRRUNA FORT F382 (ET) (PP)
 WIRRUNA HOT STUFF H356 (P)
 WIRRUNA GOLDEN VANITY F378 (ET) (P)

SIRE: WIRRUNA PERRY P150 (AI) (PP)**DAM: MORGANVALE CORA M134 (P)**

WIRRUNA JUST J181 (AI) (P)
 WIRRUNA DOREEN L544 (PP)
 WIRRUNA DOREEN G124 (AI) (P)

MORGANVALE SPARK G4 (AI) (PP)
 MORGANVALE CORA K168 (P)
 MORGANVALE CORA F257 (TW) (P)

DECEMBER 2023 GROUP BREEDPLAN EBVS

	CED DIR	CED DTRS	GL	BIRTH WT	200 WT	400 WT	600 WT	MCW	MARKET INDEX VALUES
EBV	-2.2	+2.5	-2.8	+8.1	+50	+80	+119	+116	
ACC%	43%	35%	71%	73%	69%	68%	70%	61%	
	MILK	SCROTAL	CWT	EMA	RIB FAT	RUMP FAT	RBY%	IMF%	NSR +\$162
EBV	+15	+3.8	+72	+4.0	-0.1	-0.4	+1.4	+1.0	
ACC%	56%	77%	57%	48%	51%	55%	49%	51%	

EYE PIGMENTATION: **100/100**SCROTAL CIRCUMFERENCE: **45**

NOTES: First of Wirruna Perry P150 for 2024 these calves have high growth and maternal performance. Toby is a high weight gaining sire and has a good head and eye set. Top 1% 200, 600 day growth, top 5% SS, top 10% SSR.

PURCHASER:**\$**SBM
+\$174NBT
+\$125

5

MORGANVALE TAPLIN T48 (AI) (PP) WLM T048

Date of Birth 24/04/2022

KCF BENNETT ENCORE Z311 (ET) (PP)
 NJW 79Z Z311 ENDURE 173D (IMP USA) (ET) (PP)
 BW 91H 100W RITA 79Z (ET) (P)

SIRE: MAWARRA TERMINATOR Q274 (AI) (PP)

CLOVERLEE HUNTER (PP)
 MAWARRA MISS TITANIA 054 (AI) (ET) (P)
 MAWARRA MISS TITANIA 023 (AI) (P)

MOUNT DIFFICULT HACKETT H16 (AI) (P)
 MOUNT DIFFICULT KEARNEY K18 (PP)
 MOUNT DIFFICULT VENUS H55 (AI) (P)

DAM: MORGANVALE LYDIA N012 (P)

MORGANVALE FILLMORE (PP)
 MORGANVALE LYDIA K446 (P)
 MORGANVALE LYDIA F255 (P)

DECEMBER 2023 GROUP BREEDPLAN EBVS

	CED DIR	CED DTRS	GL	BIRTH WT	200 WT	400 WT	600 WT	MCW	MARKET INDEX VALUES
EBV	+4.2	+4.9	+1.3	+5.5	+41	+71	+97	+83	
ACC%	45%	33%	73%	73%	69%	67%	67%	58%	SSR
	MILK	SCROTAL	CWT	EMA	RIB FAT	RUMP FAT	RBY%	IMF%	+\$171
EBV	+15	+2.1	+66	+5.0	+1.1	+1.2	+0.5	+0.6	NSR
ACC%	53%	66%	54%	47%	51%	54%	45%	52%	+\$155

EYE PIGMENTATION: **100/100**SCROTAL CIRCUMFERENCE: **42**

NOTES: Taplin is a dark cosmetically appealing mid maturity son of Terminator. Has the positive fat to produce great lines of weaner sale cattle. Top 20% 200, 400, 600 day growth.

PURCHASER:**\$****+\$178****+\$127**

6

MORGANVALE TARAGO T91 (PP) WLM T091

Date of Birth 08/05/2022

KCF BENNETT ENCORE Z311 (ET) (PP)
 NJW 79Z Z311 ENDURE 173D (IMP USA) (ET) (PP)
 BW 91H 100W RITA 79Z (ET) (P)

SIRE: MAWARRA TERMINATOR Q274 (AI) (PP)

CLOVERLEE HUNTER (PP)
 MAWARRA MISS TITANIA 054 (AI) (ET) (P)
 MAWARRA MISS TITANIA 023 (AI) (P)

MORGANVALE CRAMPTON (PP)
 MORGANVALE HAMPTON (PP)
 MORGANVALE MARTHA A73 (AI) (P)

DAM: MORGANVALE ALMOND N208 (P)

BRAYBOOK FEDERER F448 (P)
 MORGANVALE ALMOND J137 (P)
 MORGANVALE ALMOND F69 (P)

DECEMBER 2023 GROUP BREEDPLAN EBVS

	CED DIR	CED DTRS	GL	BIRTH WT	200 WT	400 WT	600 WT	MCW	MARKET INDEX VALUES
EBV	+2.5	+2.4	-2.5	+5.8	+43	+72	+115	+88	
ACC%	42%	31%	51%	74%	69%	68%	71%	60%	SSR
	MILK	SCROTAL	CWT	EMA	RIB FAT	RUMP FAT	RBY%	IMF%	+\$205
EBV	+17	+1.2	+79	+6.5	+1.4	+2.2	+2.4	+0.0	NSR
ACC%	52%	77%	56%	48%	50%	55%	48%	47%	+\$193

EYE PIGMENTATION: **100/100**SCROTAL CIRCUMFERENCE: **40**

NOTES: These Terminator sons are all similar, Targo is a little later maturing than the previous lot with a high weight gain and a consistent data set. Top 5% 600 day, EMA, RBY, SSR, NBT & SBM. Top 10% 200, 400 day.

PURCHASER:**\$****+\$210****+\$146**

7

MORGANVALE THOMAS T175 (PP) WLM T175

Date of Birth 27/05/2022

ALLENDALE ANZAC E114 (PP)
 WIRRUNA LEDGER L285 (AI) (PP)
 WIRRUNA DOREEN G115 (AI) (P)
SIRE: WIRRUNA PERRY P150 (AI) (PP)
 WIRRUNA JUST J181 (AI) (P)
 WIRRUNA DOREEN L544 (PP)
 WIRRUNA DOREEN G124 (AI) (P)

NJW 73S W18 HOMETOWN 10Y (IMP USA) (P)
 GLENDAN PARK LAMBERT L055 (AI) (ET) (PP)
 GLENDAN PARK ALMOND JOY D098 (P)
DAM: MORGANVALE BLUE MIST P111 (P)
 MORGANVALE FILLMORE (PP)
 MORGANVALE BLUE MIST K410 (TW) (P)
 MORGANVALE BLUE MIST E39 (P)

DECEMBER 2023 GROUP BREEDPLAN EBVS

	CED DIR	CED DTRS	GL	BIRTH WT	200 WT	400 WT	600 WT	MCW	MARKET INDEX VALUES
EBV	+1.5	+3.6	-2.3	+5.1	+43	+74	+106	+93	
ACC%	41%	32%	58%	73%	68%	67%	70%	60%	
	MILK	SCROTAL	CWT	EMA	RIB FAT	RUMP FAT	RBV%	IMF%	NSR +\$182
EBV	+24	+5.3	+74	+6.2	+0.4	+0.1	+2.0	+1.4	
ACC%	54%	76%	56%	47%	50%	54%	48%	49%	

EYE PIGMENTATION: **100/100**SCROTAL CIRCUMFERENCE: **42**

NOTES: Thomas is a younger sire with length and smooth front and will breed high value steers and good replacement females. Top 1% SS, top 5% 600 day SSR. Top 10% milk, 200, 400 day, RBV & EMA, SBM.

PURCHASER:**\$**SBM
+\$193
NBT
+\$140

8

MORGANVALE TURPIN T258 (PP) WLM T258

Date of Birth 10/07/2022

ALLENDALE ANZAC E114 (PP)
 WIRRUNA LEDGER L285 (AI) (PP)
 WIRRUNA DOREEN G115 (AI) (P)
SIRE: WIRRUNA PERRY P150 (AI) (PP)
 WIRRUNA JUST J181 (AI) (P)
 WIRRUNA DOREEN L544 (PP)
 WIRRUNA DOREEN G124 (AI) (P)

MORGANVALE CRAMPTON (PP)
 MORGANVALE HAMPTON (PP)
 MORGANVALE MARTHA A73 (AI) (P)
DAM: MORGANVALE LYDIA M203 (P)
 MORGANVALE DICKENS (P)
 MORGANVALE LYDIA H270 (P)
 MORGANVALE LYDIA B90 (P)

DECEMBER 2023 GROUP BREEDPLAN EBVS

	CED DIR	CED DTRS	GL	BIRTH WT	200 WT	400 WT	600 WT	MCW	MARKET INDEX VALUES
EBV	+1.3	+2.4	-2.2	+5.5	+44	+67	+93	+71	
ACC%	42%	33%	59%	72%	67%	66%	66%	58%	
	MILK	SCROTAL	CWT	EMA	RIB FAT	RUMP FAT	RBV%	IMF%	NSR +\$145
EBV	+26	+3.2	+61	+4.1	+1.2	+1.7	+1.1	+0.1	
ACC%	55%	77%	54%	49%	51%	55%	49%	51%	

EYE PIGMENTATION: **100/100**SCROTAL CIRCUMFERENCE: **43**

NOTES: Another stylish Perry son with growth, maternal & carcass. Top 5% Milk, top 10% 200 day.

PURCHASER:**\$**SBM
+\$160
NBT
+\$112

9

MORGANVALE TRANSIT T235 (PP) WLM T235

Date of Birth 19/06/2022

SOUTH BUKALONG WALLACE 2 (P)
 MOUNT DIFFICULT HACKETT H16 (AI) (P)
 MOUNT DIFFICULT HARMONY E121 (P)

WIRRUNA FORT F382 (ET) (PP)
 WIRRUNA HOT STUFF H356 (P)
 WIRRUNA GOLDEN VANITY F378 (ET) (P)

SIRE: MOUNT DIFFICULT KEARNEY K18 (PP)**DAM: MORGANVALE GEM Q312 (P)**

OTAPAWA SPARK 3060 (IMP NZL) (AI) (ET) (P)
 MOUNT DIFFICULT VENUS H55 (AI) (P)
 MOUNT DIFFICULT VENUS A153 (TW) (P)

MORGANVALE HAMPTON (P)
 MORGANVALE GEM M108 (P)
 MORGANVALE GEM J70 (P)

DECEMBER 2023 GROUP BREEDPLAN EBVS

	CED DIR	CED DTRS	GL	BIRTH WT	200 WT	400 WT	600 WT	MCW	MARKET INDEX VALUES	
EBV	+8.4	+4.4	-2.7	+4.6	+50	+80	+104	+78		
ACC%	49%	40%	62%	72%	69%	67%	67%	60%		
	MILK	SCROTAL	CWT	EMA	RIB FAT	RUMP FAT	RBV%	IMF%	SSR	
EBV	+22	+3.5	+78	+4.8	+1.2	+1.8	+0.5	+1.0	+\$209	
ACC%	61%	67%	57%	50%	53%	56%	48%	54%	NSR	
EYE PIGMENTATION: 100/100					SCROTAL CIRCUMFERENCE: 44					+\$194
NOTES: Transit has complete data set to breed for any program sired by the prolific Kearney. Top 1% 200 day. Top 5% 400, SSR, NSR, SBM, NBT.										
PURCHASER:									+\$219	
									NBT	
									+\$159	

10

MORGANVALE TRUMPET T223 (PP) WLM T223

Date of Birth 13/06/2022

ALLENDALE ANZAC E114 (PP)
 WIRRUNA LEDGER L285 (AI) (PP)
 WIRRUNA DOREEN G115 (AI) (P)

MOUNT DIFFICULT HACKETT H16 (AI) (P)
 MOUNT DIFFICULT KEARNEY K18 (PP)
 MOUNT DIFFICULT VENUS H55 (AI) (P)

SIRE: WIRRUNA PERRY P150 (AI) (PP)**DAM: MORGANVALE GEM P178 (P)**

WIRRUNA JUST J181 (AI) (P)
 WIRRUNA DOREEN L544 (PP)
 WIRRUNA DOREEN G124 (AI) (P)

MORGANVALE HAMPTON (P)
 MORGANVALE GEM M108 (P)
 MORGANVALE GEM J70 (P)

DECEMBER 2023 GROUP BREEDPLAN EBVS

	CED DIR	CED DTRS	GL	BIRTH WT	200 WT	400 WT	600 WT	MCW	MARKET INDEX VALUES	
EBV	+3.1	+3.9	-2.2	+5.4	+47	+82	+119	+110		
ACC%	42%	33%	59%	73%	68%	67%	69%	60%		
	MILK	SCROTAL	CWT	EMA	RIB FAT	RUMP FAT	RBV%	IMF%	SSR	
EBV	+21	+4.1	+84	+4.3	-0.1	-0.5	+1.4	+0.7	+\$202	
ACC%	55%	76%	56%	48%	50%	55%	48%	51%	NSR	
EYE PIGMENTATION: 100/100					SCROTAL CIRCUMFERENCE: 44					+\$180
NOTES: A mid maturity thick heavy son of Perry will put weight into his progeny. Top 1% 600 day .Top 5% 200, 400 day, SS, SSR & SBM.										
PURCHASER:									+\$205	
									NBT	
									+\$149	

11

MORGANVALE THISTLE T144 (PP) WLM T144

Date of Birth 21/05/2022

MSU TCF REVOLUTION 4R (IMP USA) (PP)
 KCF BENNETT REVOLUTION X51 (IMP USA) (P)
 KCF MISS PROFICIENT U201 (P)

SIRE: WIRRUNA NATIONAL N322 (AI) (PP)

MATARIKI HOLY - SMOKE (IMP NZL) (P)
 WIRRUNA DOREEN J56 (AI) (P)
 WIRRUNA DOREEN G327 (P)

DAYS CALIBRE G74 (PP)
 MORGANVALE CALIBRE K233 (AI) (PP)
 MORGANVALE KRYSTLE G86 (AI) (P)

DAM: MORGANVALE ALMOND MIST P075 (P)

VP RAFTSMAN D73 (AI) (P)
 MORGANVALE ALMOND MIST G333 (P)
 HEATHERDALE ALMOND JOY A50 (AI) (P)

DECEMBER 2023 GROUP BREEDPLAN EBVS

	CED DIR	CED DTRS	GL	BIRTH WT	200 WT	400 WT	600 WT	MCW	MARKET INDEX VALUES
EBV	+2.2	+2.7	+0.9	+4.4	+40	+63	+85	+71	
ACC%	44%	37%	62%	74%	69%	68%	71%	62%	
	MILK	SCROTAL	CWT	EMA	RIB FAT	RUMP FAT	RB%Y	IMF%	NSR +\$155
EBV	+18	+1.4	+61	+8.7	+0.8	+1.0	+2.3	+0.8	
ACC%	58%	77%	57%	49%	52%	56%	50%	53%	

EYE PIGMENTATION: **100/100**SCROTAL CIRCUMFERENCE: **41**

NOTES: First of the National sons who has breed changing carcase values. Thistle is deep easy doing with a data set to improve any herd. Top 1% EMA.

PURCHASER:**\$**SBM
+\$165NBT
+\$123

12

MORGANVALE TOURIST T96 (PP) WLM T096

Date of Birth 09/05/2022

SOUTH BUKALONG WALLACE 2 (P)
 MOUNT DIFFICULT HACKETT H16 (AI) (P)
 MOUNT DIFFICULT HARMONY E121 (P)

SIRE: MOUNT DIFFICULT KEARNEY K18 (PP)

OTAPAWA SPARK 3060 (IMP NZL) (AI) (ET) (P)
 MOUNT DIFFICULT VENUS H55 (AI) (P)
 MOUNT DIFFICULT VENUS A153 (TW) (P)

WIRRUNA FLETCHER F214 (P)
 WIRRUNA MELVILLE M243 (AI) (ET) (TW) (PP)
 WIRRUNA CORA D9 (AI) (P)

DAM: MORGANVALE ALMOND JOY Q355 (P)

MORGANVALE FORSYTH (PP)
 MORGANVALE ALMOND JOY M059 (P)
 MORGANVALE ALMOND JOY J211 (P)

DECEMBER 2023 GROUP BREEDPLAN EBVS

	CED DIR	CED DTRS	GL	BIRTH WT	200 WT	400 WT	600 WT	MCW	MARKET INDEX VALUES
EBV	+10.0	+7.1	-2.9	+2.9	+39	+65	+84	+65	
ACC%	48%	38%	61%	73%	69%	68%	71%	62%	
	MILK	SCROTAL	CWT	EMA	RIB FAT	RUMP FAT	RB%Y	IMF%	NSR +\$164
EBV	+22	+2.0	+66	+4.7	+1.1	+1.3	+0.7	+0.9	
ACC%	60%	77%	59%	51%	53%	57%	51%	54%	

EYE PIGMENTATION: **100/100**SCROTAL CIRCUMFERENCE: **42**

NOTES: Tourist is a real curve bending sire with high calving ease and a soft dark skin.
 Top 10% CE, Top 15% GL.

PURCHASER:**\$**SBM
+\$196NBT
+\$145

13

MORGANVALE TIKTOK T191 (PP) WLM T191

Date of Birth 30/05/2022

MSU TCF REVOLUTION 4R (IMP USA) (PP)
 KCF BENNETT REVOLUTION X51 (IMP USA) (P)
 KCF MISS PROFICIENT U201 (P)

ALLENDALE WATERHOUSE D1 (PP)
 DAYS FABULOUS K173 (PP)
 DAYS DAWN F120 (P)

SIRE: WIRRUNA NATIONAL N322 (AI) (PP)**DAM: MORGANVALE ALMOND QUEEN P293 (P)**

MATARIKI HOLY - SMOKE (IMP NZL) (P)
 WIRRUNA DOREEN J56 (AI) (P)
 WIRRUNA DOREEN G327 (P)

REDGATE RAMSAY D415 (AI) (ET) (PP)
 MORGANVALE ALMOND QUEEN H26 (P)
 MORGANVALE ALMOND QUEEN E269 (P)

DECEMBER 2023 GROUP BREEDPLAN EBVS

	CED DIR	CED DTRS	GL	BIRTH WT	200 WT	400 WT	600 WT	MCW	MARKET INDEX VALUES	
EBV	+1.8	+2.9	+0.5	+8.3	+50	+79	+107	+96		
ACC%	46%	38%	62%	74%	69%	68%	71%	62%		
	MILK	SCROTAL	CWT	EMA	RIB FAT	RUMP FAT	RBV%	IMF%	SSR	
EBV	+18	+1.9	+66	+8.2	-0.3	-0.6	+2.5	+1.6	+\$183	
ACC%	58%	77%	58%	50%	53%	57%	51%	54%	NSR	
EYE PIGMENTATION: 100/100					SCROTAL CIRCUMFERENCE: 40					+\$169
NOTES: A higher growth and frame than a usual National son but retains the high carcass merit of his sire. Top 1% 200 day & EMA. Top 5% 400 & 600 day. Top 10% SSR.										
PURCHASER:									SBM	
									+\$190	
									NBT	
									+\$144	

14

MORGANVALE TITUS T151 (PP) WLM T151

Date of Birth 21/05/2022

ALLENDALE ANZAC E114 (PP)
 WIRRUNA LEDGER L285 (AI) (PP)
 WIRRUNA DOREEN G115 (AI) (P)

NJW 73S W18 HOMETOWN 10Y (IMP USA) (P)
 GLENDAN PARK LAMBERT L055 (AI) (ET) (PP)
 GLENDAN PARK ALMOND JOY D098 (P)

SIRE: WIRRUNA PERRY P150 (AI) (PP)**DAM: MORGANVALE JANICE Q209 (P)**

WIRRUNA JUST J181 (AI) (P)
 WIRRUNA DOREEN L544 (PP)
 WIRRUNA DOREEN G124 (AI) (P)

MORGANVALE CYRIL (P)
 MORGANVALE JANICE H81 (P)
 MORGANVALE JANICE D328 (P)

DECEMBER 2023 GROUP BREEDPLAN EBVS

	CED DIR	CED DTRS	GL	BIRTH WT	200 WT	400 WT	600 WT	MCW	MARKET INDEX VALUES	
EBV	-0.5	+2.8	-0.8	+5.6	+42	+64	+84	+74		
ACC%	41%	32%	58%	73%	68%	67%	70%	60%		
	MILK	SCROTAL	CWT	EMA	RIB FAT	RUMP FAT	RBV%	IMF%	SSR	
EBV	+23	+4.0	+48	+3.2	-0.8	-1.8	+1.4	+0.9	+\$136	
ACC%	54%	76%	56%	47%	50%	54%	48%	49%	NSR	
EYE PIGMENTATION: 100/100					SCROTAL CIRCUMFERENCE: 45					+\$113
NOTES: A mid maturity, high maternal son of Perry. Top 5% SS, Top 10% Milk.										
PURCHASER:									SBM	
									+\$132	
									NBT	
									+\$96	

15

MORGANVALE TEXAS T58 (AI) (PP) WLM T058

Date of Birth 28/04/2022

KCF BENNETT ENCORE Z311 (ET) (PP)
 NJW 79Z Z311 ENDURE 173D (IMP USA) (ET) (PP)
 BW 91H 100W RITA 79Z (ET) (P)

ALLENDALE WATERHOUSE D1 (PP)
 DAYS FABULOUS K173 (PP)
 DAYS DAWN F120 (P)

SIRE: MAWARRA TERMINATOR Q274 (AI) (PP)
 CLOVERLEE HUNTER (PP)

DAM: MORGANVALE LADY ALMOND P382 (P)
 KOANUI ROCKET 0219 (IMP NZL) (P)

MAWARRA MISS TITANIA 054 (AI) (ET) (P)
 MAWARRA MISS TITANIA 023 (AI) (P)

MORGANVALE LADY ALMOND E2 (AI) (P)
 MORGANVALE LADY ALMOND B207 (P)

DECEMBER 2023 GROUP BREEDPLAN EBVS

	CED DIR	CED DTRS	GL	BIRTH WT	200 WT	400 WT	600 WT	MCW	MARKET INDEX VALUES	
EBV	+1.6	+6.3	+2.6	+7.4	+47	+74	+110	+92		SSR +\$160
ACC%	44%	33%	74%	74%	69%	69%	70%	61%		
	MILK	SCROTAL	CWT	EMA	RIB FAT	RUMP FAT	RBY%	IMF%	SSR +\$160	
EBV	+25	+1.9	+68	+4.8	+1.0	+1.2	+0.4	+0.7		NSR +\$136
ACC%	52%	77%	58%	50%	52%	56%	50%	52%	NSR +\$136	
EYE PIGMENTATION: 100/100					SCROTAL CIRCUMFERENCE: 40					SBM +\$176
NOTES: A larger frame Terminator son with positive finishing ability to breed good replacement females. Top 5% 200, 600 day & Milk.										
PURCHASER:					\$					NBT +\$128

16

MORGANVALE TARCOWIE T112 (PP) WLM T112

Date of Birth 13/05/2022

NITHDALE JACKAL 090029 (P)
 ORARI GORGE MISCHIEF 120083 (IMP NZL) (P)
 NITHDALE LESLIE 090020 (P)

INJEMIRA ANZAC H006 (PP)
 INJEMIRA ANZAC H006 M164 AI (AI) (PP)
 INJEMIRA DOMINO LASS G041 (P)

SIRE: WIRRUNA QANIT Q069 (AI) (PP)

DAM: MORGANVALE CORA R103 (P)

KCF BENNETT REVOLUTION X51 (IMP USA) (P)
 WIRRUNA MADAM L14 (ET) (PP)
 WIRRUNA MADAM F18 (AI) (P)

MORGANVALE HAMPTON (PP)
 MORGANVALE CORA M209 (P)
 MORGANVALE CORA G290 (AI) (P)

DECEMBER 2023 GROUP BREEDPLAN EBVS

	CED DIR	CED DTRS	GL	BIRTH WT	200 WT	400 WT	600 WT	MCW	MARKET INDEX VALUES	
EBV	+8.9	+2.5	-3.1	+1.7	+39	+68	+94	+63		SSR +\$195
ACC%	41%	32%	58%	72%	67%	66%	68%	58%		
	MILK	SCROTAL	CWT	EMA	RIB FAT	RUMP FAT	RBY%	IMF%	SSR +\$195	
EBV	+27	+2.3	+77	+5.4	+2.3	+3.5	+0.4	+0.4		NSR +\$183
ACC%	52%	75%	54%	45%	48%	52%	46%	47%	NSR +\$183	
EYE PIGMENTATION: 100/100					SCROTAL CIRCUMFERENCE: 42					SBM +\$206
NOTES: Tarcowie is a safe heifer option who doesn't lose growth or carcase with a positive finish. Top 5% Milk, Rib, Rump & SSR. Top 15% CE, GL & 400 day. Suit heifer joining (H).										
PURCHASER:					\$					NBT +\$150

17

MORGANVALE TRISTRAM T209 (PP) WLM T209

Date of Birth 03/06/2022

NITHDALE JACKAL 090029 (P)

ORARI GORGE MISCHIEF 120083 (IMP NZL) (P)

NITHDALE LESLIE 090020 (P)

SIRE: WIRRUNA QANIT Q069 (AI) (PP)

KCF BENNETT REVOLUTION X51 (IMP USA) (P)

WIRRUNA MADAM L14 (ET) (PP)

WIRRUNA MADAM F18 (AI) (P)

INJEMIRA ANZAC H006 (PP)

INJEMIRA ANZAC H006 M164 AI (AI) (PP)

INJEMIRA DOMINO LASS G041 (P)

DAM: MORGANVALE JEWEL R129 (P)

BRAYBOOK GUNSHOT G480 (AI) (P)

MORGANVALE JEWEL M190 (P)

MORGANVALE JEWEL H63 (P)

DECEMBER 2023 GROUP BREEDPLAN EBVS

	CED DIR	CED DTRS	GL	BIRTH WT	200 WT	400 WT	600 WT	MCW	MARKET INDEX VALUES
EBV	+1.7	-1.4	-5.4	+3.7	+47	+76	+111	+97	
ACC%	40%	32%	58%	69%	67%	65%	67%	57%	
	MILK	SCROTAL	CWT	EMA	RIB FAT	RUMP FAT	RBV%	IMF%	SSR
EBV	+20	+2.0	+80	+3.8	+0.4	+0.2	+1.1	+0.0	+\$180
ACC%	51%	74%	54%	45%	48%	52%	46%	47%	

EYE PIGMENTATION: **100/100**SCROTAL CIRCUMFERENCE: **40**

NOTES: By the same sire as the previous lot and also from a 2 year old heifer, Tristram has the same curve bending growth, maternal, and positive finishing ability. Top 5% GL, 200, 400 & 600 day.

PURCHASER:**\$****NSR****SBM**
+\$178**NBT**
+\$131

18

MORGANVALE TYCHO T132 (P) WLM T132

Date of Birth 19/05/2022

DAYS CALIBRE G74 (PP)

MORGANVALE CALIBRE K233 (AI) (PP)

MORGANVALE KRYSTLE G86 (AI) (P)

SIRE: MORGANVALE NAVAL (PP)

REDGATE RAMSAY D415 (AI) (ET) (PP)

MORGANVALE CORA H205 (P)

MORGANVALE CORA F52 (P)

ALLENDALE WATERHOUSE D1 (PP)

DAYS FABULOUS K173 (PP)

DAYS DAWN F120 (P)

DAM: MORGANVALE LADY ALMOND P356 (P)

REDGATE RAMSAY D415 (AI) (ET) (PP)

MORGANVALE LADY ALMONG F20 (P)

MORGANVALE LADY ALMOND E22 (P)

DECEMBER 2023 GROUP BREEDPLAN EBVS

	CED DIR	CED DTRS	GL	BIRTH WT	200 WT	400 WT	600 WT	MCW	MARKET INDEX VALUES
EBV	+7.3	+4.8	-1.5	+3.4	+30	+47	+67	+47	
ACC%	41%	33%	45%	74%	69%	68%	70%	60%	
	MILK	SCROTAL	CWT	EMA	RIB FAT	RUMP FAT	RBV%	IMF%	SSR
EBV	+20	+3.0	+44	+6.2	+1.9	+3.1	+0.8	+1.1	+\$144
ACC%	52%	77%	56%	47%	50%	54%	47%	46%	

EYE PIGMENTATION: **80/100**SCROTAL CIRCUMFERENCE: **43**

NOTES: Tycho is a balanced herd improving sire with good data set. Top 5% Rump, Top 10% EMA, Rib, EBV.

PURCHASER:**\$****NSR****SBM**
+\$161**NBT**
+\$120



LOT 5 MORGANVALE TAPLIN T48 (AI) (PP) WLM T048



LOT 7 MORGANVALE THOMAS T175 (PP) WLM T175



LOT 8 MORGANVALE TURPIN T258 (PP) WLM T258



LOT 9 MORGANVALE TRANSIT T235 (PP) WLM T235



LOT 10 MORGANVALE TRUMPET T223 (PP) WLM T223



LOT 11 MORGANVALE THISTLE T144 (PP) WLM T144



LOT 15 MORGANVALE TEXAS T58 (AI) (PP) WLM T058



LOT 17 MORGANVALE TRISTRAM T209 (PP) WLM T209



LOT 20 MORGANVALE TUTOR T45 (AI) (PP) WLM T045



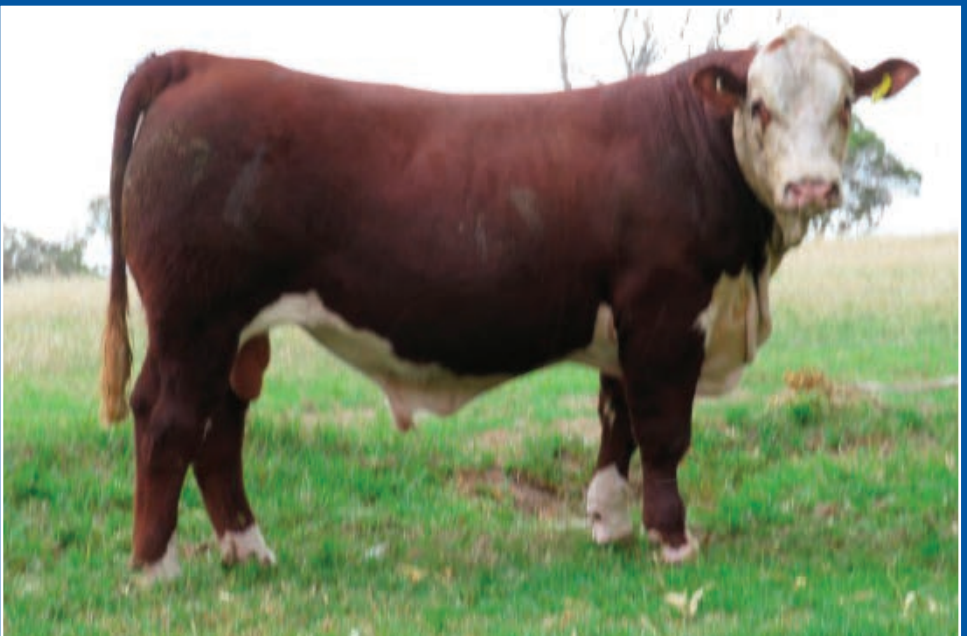
LOT 22 MORGANVALE TAWNEY T37 (AI) (PP) WLM T037

2024 Morganvale Annual Production Sale Summary																
Lot	Reg. No.	CED	BWT	200	400	600	Milk	SC	EMA	RIB	RUMP	IMF	SSR	NSR	SBM	NBT
1	WLMT051	-2.1	7.8	44.0	70.0	95.0	19.0	2.1	6.6	0.5	0.2	0.4	157	138	153	102
2	WLMT093	1.0	1.9	33.0	57.0	81.0	16.0	1.8	6.8	1.6	2.8	1.0	166	166	166	117
3	WLMT055	9.6	3.3	42.0	69.0	95.0	22.0	4.1	7.3	1.6	1.8	0.5	213	206	223	160
4	WLMT078	-2.2	8.1	50.0	80.0	119.0	15.0	3.8	4.0	-0.1	-0.4	1.0	184	162	174	125
5	WLMT048	4.2	5.5	41.0	71.0	97.0	15.0	2.1	5.0	1.1	1.2	0.6	171	155	178	127
6	WLMT091	2.5	5.8	43.0	72.0	115.0	17.0	1.2	6.5	1.4	2.2	0.0	205	193	210	146
7	WLMT175	1.5	5.1	43.0	74.0	106.0	24.0	5.3	6.2	0.4	0.1	1.4	199	182	193	140
8	WLMT258	1.3	5.5	44.0	67.0	93.0	26.0	3.2	4.1	1.2	1.7	0.1	162	145	160	112
9	WLMT235	8.4	4.6	50.0	80.0	104.0	22.0	3.5	4.8	1.2	1.8	1.0	209	194	219	159
10	WLMT223	3.1	5.4	47.0	82.0	119.0	21.0	4.1	4.3	-0.1	-0.5	0.7	202	180	205	149
11	WLMT144	2.2	4.4	40.0	63.0	85.0	18.0	1.4	8.7	0.8	1.0	0.8	160	155	165	123
12	WLMT096	10.0	2.9	39.0	65.0	84.0	22.0	2.0	4.7	1.1	1.3	0.9	176	164	196	145
13	WLMT191	1.8	8.3	50.0	79.0	107.0	18.0	1.9	8.2	-0.3	-0.6	1.6	183	169	190	144
14	WLMT151	-0.5	5.6	42.0	64.0	84.0	23.0	4.0	3.2	-0.8	-1.8	0.9	136	113	132	96
15	WLMT058	1.6	7.4	47.0	74.0	110.0	25.0	1.9	4.8	1.0	1.2	0.7	160	136	176	128
16	WLMT112	8.9	1.7	39.0	68.0	94.0	27.0	2.3	5.4	2.3	3.5	0.4	195	183	206	150
17	WLMT209	1.7	3.7	47.0	76.0	111.0	20.0	2.0	3.8	0.4	0.2	0.0	180	159	178	131
18	WLMT132	7.3	3.4	30.0	47.0	67.0	20.0	3.0	6.2	1.9	3.1	1.1	144	142	161	120
19	WLMT004	11.1	-0.6	31.0	54.0	64.0	32.0	1.4	3.5	2.2	2.7	0.9	140	129	170	129
20	WLMT045	7.6	4.0	35.0	61.0	82.0	24.0	2.9	3.9	1.0	0.8	0.2	152	136	169	126
21	WLMT080	0.5	8.1	52.0	87.0	121.0	16.0	3.9	4.2	0.1	-0.2	0.7	189	168	185	137
22	WLMT037	6.1	3.0	38.0	64.0	85.0	25.0	2.1	5.5	1.8	1.9	1.4	164	151	180	134
23	WLMT095	-1.5	6.9	46.0	69.0	101.0	26.0	1.7	4.5	0.1	-0.6	1.1	163	137	160	115
24	WLMT065	4.4	4.6	38.0	62.0	88.0	22.0	2.1	3.9	0.1	-0.2	0.0	140	120	156	115
25	WLMT140	6.3	4.4	42.0	68.0	91.0	19.0	0.6	9.1	1.2	1.3	1.9	186	181	201	153

26	WLMT307	0.5	6.3	51.0	85.0	118.0	190	1.6	5.9	-0.1	0.0	0.4	184	169	190	143
27	WLMT170	-2.0	7.1	42.0	67.0	93.0	18.0	3.1	6.1	-0.1	-0.4	0.6	142	126	137	103
28	WLMT293	5.9	6.7	47.0	80.0	110.0	19.0	2.8	4.6	-0.4	-0.8	0.2	187	167	199	149
29	WLMT289	3.1	4.1	44.0	66.0	90.0	20.0	2.8	8.3	0.3	0.1	1.8	189	184	193	141
30	WLMT147	8.3	2.0	39.0	65.0	88.0	25.0	3.6	5.4	3.1	4.6	1.2	204	198	208	149
31	WLMT188	4.6	6.3	45.0	77.0	116.0	18.0	3.1	4.9	-0.5	-0.7	0.0	199	182	213	152
32	WLMT309	4.3	5.3	41.0	68.0	91.0	17.0	3.0	8.0	0.2	-0.1	1.0	181	174	186	138
33	WLMT097	6.3	8.6	54.0	89.0	120.0	21.0	3.9	3.2	-0.8	-1.6	-0.4	189	164	202	153
34	WLMT119	1.2	3.1	31.0	54.0	71.0	12.0	2.7	5.1	3.2	4.8	1.2	156	156	148	98
35	WLMT181	-1.7	6.1	40.0	63.0	87.0	15.0	4.7	6.7	0.6	0.7	2.1	166	155	153	108
36	WLMT079	3.1	4.7	40.0	57.0	71.0	15.0	1.0	8.3	1.5	1.9	1.9	161	160	163	117
37	WLMT141	5.2	2.9	36.0	54.0	67.0	23.0	3.8	4.9	1.4	2.1	2.4	160	148	161	116
38	WLMT110	8.0	3.8	41.0	70.0	92.0	27.0	2.6	5.3	0.8	0.7	0.9	181	163	197	146
39	WLMT041	10.0	1.4	29.0	50.0	61.0	19.0	2.8	4.4	2.7	3.7	1.4	151	145	166	120
40	WLMT338	2.3	5.6	40.0	63.0	87.0	17.0	1.1	5.7	0.4	0.3	1.1	145	131	155	115
41	WLMT354	2.2	4.6	37.0	58.0	85.0	16.0	1.0	5.4	1.9	2.7	0.6	148	136	153	106
42	WLMT358	1.5	4.9	36.0	58.0	80.0	19.0	3.1	3.8	1.7	2.3	0.9	133	119	135	97
43	WLMT195	4.0	5.4	40.0	60.0	83.0	21.0	3.8	5.2	1.8	2.2	0.7	178	167	175	119
44	WLMT122	2.2	4.4	38.0	60.0	82.0	26.0	3.4	5.8	0.6	-0.1	1.0	158	141	159	115
45	WLMT230	-0.1	5.6	41.0	62.0	86.0	13.0	1.0	5.4	0.6	0.6	0.6	155	146	155	107
46	WLMT076	7.0	2.2	24.0	40.0	58.0	19.0	3.0	6.4	1.3	2.3	0.9	135	134	149	109
47	WLMT274	1.9	7.2	48.0	70.0	97.0	21.0	2.7	6.3	0.5	0.0	-0.1	172	156	172	121
48	WLMT012	9.7	3.2	38.0	62.0	80.0	16.0	3.4	5.1	2.3	3.3	0.4	191	188	195	139
49	WLMT030	8.7	2.1	26.0	47.0	56.0	17.0	3.9	6.9	1.5	1.6	1.1	169	168	170	120
50	WLMT211	1.0	8.7	51.0	90.0	130.0	20.0	1.9	8.2	-0.6	-1.0	0.0	196	175	203	154
51	WLMT164	6.3	3.9	33.0	48.0	68.0	22.0	2.0	4.5	0.8	1.1	0.7	128	118	148	110
52	WLMT271	11.0	1.5	34.0	46.0	66.0	23.0	3.6	6.4	2.4	2.6	1.5	182	178	196	139



LOT 25 MORGANVALE THUNDER T140 (PP) WLM T140



LOT 26 MORGANVALE THEO T307 (PP) WLM T307



LOT 28 MORGANVALE TILLEY T293 (PP) WLM T293



LOT 29 MORGANVALE TEAGUE T289 (PP) WLM T289



LOT 36 MORGANVALE TURF T79 (PP) WLM T079



LOT 40 MORGANVALE TITANIC T338 (P) WLM T338



LOT 43 MORGANVALE TILLEY T358 (P) WLM T358



LOT 45 MORGANVALE TREMAINE T230 (P) WLM T230

19

MORGANVALE TRENT T4 (PP) WLM T004

Date of Birth 07/04/2022

QUAMBY PLAINS STOCKMASTER Y118 (P)
 WIRRUNA FLETCHER F214 (P)
 WIRRUNA LAST DAY B16 (A) (H#)

SIRE: WIRRUNA MELVILLE M243 (AI) (ET) (TW) (PP)

KOANUI ROCKET O219 (IMP NZL) (P)
 WIRRUNA CORA D9 (AI) (P)
 WIRRUNA CORA B38 (AI) (ET) (P)

INJEMIRA ANZAC H006 (PP)
 INJEMIRA ANZAC H006 M164 AI (AI) (PP)
 INJEMIRA DOMINO LASS G041 (P)
DAM: MORGANVALE ALMOND QUEEN Q388 (P)
 REDGATE RAMSAY D415 (AI) (ET) (PP)
 MORGANVALE ALMOND QUEEN G88 (P)
 MORGANVALE ALMOND QUEEN E94 (P)

DECEMBER 2023 GROUP BREEDPLAN EBVS

	CED DIR	CED DTRS	GL	BIRTH WT	200 WT	400 WT	600 WT	MCW	MARKET INDEX VALUES
EBV	+11.1	+7.1	-3.4	-0.6	+31	+54	+64	+37	
ACC%	45%	37%	58%	73%	69%	68%	70%	61%	
	MILK	SCROTAL	CWT	EMA	RIB FAT	RUMP FAT	RBV%	IMF%	SSR
EBV	+32	+1.4	+55	+3.5	+2.2	+2.7	-0.4	+0.9	+\$140
ACC%	58%	77%	57%	50%	52%	56%	49%	52%	NSR

EYE PIGMENTATION: **100/100**SCROTAL CIRCUMFERENCE: **39**

NOTES: A very high calving ease and maternal heifer joining sire by the proven sire in Melville. Top 1% Milk, Top 5% calving ease. Suitable for heifers (H).

PURCHASER:**\$****+\$129**

SBM

+\$170

NBT

+\$129

20

MORGANVALE TUTOR T45 (AI) (PP) WLM T045

Date of Birth 22/04/2022

KCF BENNETT ENCORE Z311 (ET) (PP)
 NJW 79Z Z311 ENDURE 173D (IMP USA) (ET) (PP)
 BW 91H 100W RITA 79Z (ET) (P)

SIRE: MAWARRA TERMINATOR Q274 (AI) (PP)

CLOVERLEE HUNTER (PP)
 MAWARRA MISS TITANIA 054 (AI) (ET) (P)
 MAWARRA MISS TITANIA 023 (AI) (P)

MOUNT DIFFICULT HACKETT H16 (AI) (P)
 MOUNT DIFFICULT KEARNEY K18 (PP)
 MOUNT DIFFICULT VENUS H55 (AI) (P)
DAM: MORGANVALE ALMOND JOY P024 (P)
 YALGOO BUSKER H243 (PP)
 MORGANVALE ALMOND JOY L269 (P)
 MORGANVALE ALMOND JOY E54 (P)

DECEMBER 2023 GROUP BREEDPLAN EBVS

	CED DIR	CED DTRS	GL	BIRTH WT	200 WT	400 WT	600 WT	MCW	MARKET INDEX VALUES
EBV	+7.6	+5.8	+2.4	+4.0	+35	+61	+82	+70	
ACC%	44%	32%	73%	74%	69%	69%	71%	61%	
	MILK	SCROTAL	CWT	EMA	RIB FAT	RUMP FAT	RBV%	IMF%	SSR
EBV	+24	+2.9	+56	+3.9	+1.0	+0.8	+0.9	+0.2	+\$152
ACC%	53%	77%	57%	49%	51%	55%	49%	51%	NSR

EYE PIGMENTATION: **100/50**SCROTAL CIRCUMFERENCE: **45**

NOTES: Tutor is a thick, mid maturing easy doing, positive finishing sire with eye appeal.

PURCHASER:**\$****+\$136**

SBM

+\$169

NBT

+\$126

21

MORGANVALE TERRY T80 (PP) WLM T080

Date of Birth 06/05/2022

ALLENDALE ANZAC E114 (PP)
 WIRRUNA LEDGER L285 (AI) (PP)
 WIRRUNA DOREEN G115 (AI) (P)
SIRE: WIRRUNA PERRY P150 (AI) (PP)
 WIRRUNA JUST J181 (AI) (P)
 WIRRUNA DOREEN L544 (PP)
 WIRRUNA DOREEN G124 (AI) (P)

MOUNT DIFFICULT HACKETT H16 (AI) (P)
 MOUNT DIFFICULT KEARNEY K18 (PP)
 MOUNT DIFFICULT VENUS H55 (AI) (P)
DAM: MORGANVALE ALMOND N160 (P)
 MORGANVALE SPARK G4 (AI) (PP)
 MORGANVALE KRISTLE L60 (P)
 MORGANVALE KRISTLE G171 (AI) (P)

DECEMBER 2023 GROUP BREEDPLAN EBVS

	CED DIR	CED DTRS	GL	BIRTH WT	200 WT	400 WT	600 WT	MCW	MARKET INDEX VALUES	
EBV	+0.5	+3.1	-1.7	+8.1	+52	+87	+121	+124		SSR +\$189
ACC%	43%	34%	61%	74%	69%	68%	70%	61%		
	MILK	SCROTAL	CWT	EMA	RIB FAT	RUMP FAT	RBY%	IMF%	NSR +\$168	
EBV	+16	+3.9	+78	+4.2	+0.1	-0.2	+1.1	+0.7		
ACC%	56%	77%	57%	49%	52%	56%	50%	52%	SBM +\$185	
EYE PIGMENTATION: 100/100					SCROTAL CIRCUMFERENCE: 45					NBT +\$137
NOTES: Terry is a wide topped deep sided. mid maturity finishing sire. Top 1% 200, 400, 600 day. Top 5% SS.										
PURCHASER:						\$				

22

MORGANVALE TAWNEY T37 (AI) (PP) WLM T037

Date of Birth 20/04/2022

KCF BENNETT ENCORE Z311 (ET) (PP)
 NJW 79Z Z311 ENDURE 173D (IMP USA) (ET) (PP)
 BW 91H 100W RITA 79Z (ET) (P)
SIRE: MAWARRA TERMINATOR Q274 (AI) (PP)
 CLOVERLEE HUNTER (PP)
 MAWARRA MISS TITANIA 054 (AI) (ET) (P)
 MAWARRA MISS TITANIA 023 (AI) (P)

NJW 73S W18 HOMETOWN 10Y (IMP USA) (P)
 GLENDAN PARK LAMBERT L055 (AI) (ET) (PP)
 GLENDAN PARK ALMOND JOY D098 (P)
DAM: MORGANVALE GEM Q211 (P)
 MORGANVALE SPARK G4 (AI) (PP)
 MORGANVALE GEM K089 (P)
 MORGANVALE GEM E6 (AI) (P)

DECEMBER 2023 GROUP BREEDPLAN EBVS

	CED DIR	CED DTRS	GL	BIRTH WT	200 WT	400 WT	600 WT	MCW	MARKET INDEX VALUES	
EBV	+6.1	+6.3	+1.4	+3.0	+38	+64	+85	+65		SSR +\$164
ACC%	43%	32%	67%	74%	69%	68%	70%	60%		
	MILK	SCROTAL	CWT	EMA	RIB FAT	RUMP FAT	RBY%	IMF%	NSR +\$151	
EBV	+25	+2.1	+64	+5.5	+1.8	+1.9	+0.4	+1.4		
ACC%	51%	76%	56%	48%	51%	55%	48%	50%	SBM +\$180	
EYE PIGMENTATION: 100/100					SCROTAL CIRCUMFERENCE: 44					NBT +\$134
NOTES: Another thick deep son of Terminator with shape and hind quarter. A curve bending data set with high carcase values. Top 5% Milk, Top 15% EMA.										
PURCHASER:						\$				

23

MORGANVALE TERRIFIC T95 (PP) WLM T095

Date of Birth 09/05/2022

MSU TCF REVOLUTION 4R (IMP USA) (PP)
 KCF BENNETT REVOLUTION X51 (IMP USA) (P)
 KCF MISS PROFICIENT U201 (P)

KOANUI TECHNO 3062 (IMP NZL) (PP)
 YAVENVALE MILESTONE M397 (AI) (PP)
 YAVENVALE RUBY J472 (AI) (P)

SIRE: WIRRUNA NATIONAL N322 (AI) (PP)**DAM: MORGANVALE LYDIA Q071 (P)**

MATARIKI HOLY - SMOKE (IMP NZL) (P)
 WIRRUNA DOREEN J56 (AI) (P)
 WIRRUNA DOREEN G327 (P)

MORGANVALE SPARK G4 (AI) (PP)
 MORGANVALE LYDIA K112 (P)
 HEATHERDALE LYDIA A7 (AI) (P)

DECEMBER 2023 GROUP BREEDPLAN EBVS

	CED DIR	CED DTRS	GL	BIRTH WT	200 WT	400 WT	600 WT	MCW	MARKET INDEX VALUES
EBV	-1.5	+1.4	-2.4	+6.9	+46	+69	+101	+77	
ACC%	43%	35%	52%	74%	69%	68%	70%	60%	+\$163
	MILK	SCROTAL	CWT	EMA	RIB FAT	RUMP FAT	RBV%	IMF%	SSR
EBV	+26	+1.7	+63	+4.5	+0.1	-0.6	+1.9	+1.1	
ACC%	54%	77%	57%	50%	52%	56%	49%	49%	+\$137

EYE PIGMENTATION: **100/100**SCROTAL CIRCUMFERENCE: **38****NOTES:** A National son with length and good 600 day growth. Will bred progeny for all programs.**PURCHASER:****\$****SBM**
+\$160**NBT**
+\$115

24

MORGANVALE TATE T65 (AI) (PP) WLM T065

Date of Birth 01/05/2022

KCF BENNETT ENCORE Z311 (ET) (PP)
 NJW 79Z Z311 ENDURE 173D (IMP USA) (ET) (PP)
 BW 91H 100W RITA 79Z (ET) (P)

INJEMIRA ANZAC H006 (PP)
 INJEMIRA ANZAC H006 M164 AI (AI) (PP)
 INJEMIRA DOMINO LASS G041 (P)

SIRE: MAWARRA TERMINATOR Q274 (AI) (PP)**DAM: MORGANVALE LADY ALMOND Q156 (P)**

CLOVERLEE HUNTER (PP)
 MAWARRA MISS TITANIA 054 (AI) (ET) (P)
 MAWARRA MISS TITANIA 023 (AI) (P)

REDGATE RAMSAY D415 (AI) (ET) (PP)
 MORGANVALE LADY ALMOND H342 (P)
 MORGANVALE LADY ALMOND B172 (P)

DECEMBER 2023 GROUP BREEDPLAN EBVS

	CED DIR	CED DTRS	GL	BIRTH WT	200 WT	400 WT	600 WT	MCW	MARKET INDEX VALUES
EBV	+4.4	+3.2	+2.1	+4.6	+38	+62	+88	+71	
ACC%	43%	32%	68%	74%	69%	69%	70%	60%	+\$140
	MILK	SCROTAL	CWT	EMA	RIB FAT	RUMP FAT	RBV%	IMF%	SSR
EBV	+22	+2.1	+60	+3.9	+0.1	-0.2	+1.1	+0.0	
ACC%	52%	77%	57%	48%	51%	55%	48%	50%	+\$120

EYE PIGMENTATION: **100/100**SCROTAL CIRCUMFERENCE: **43****NOTES:** Typical of the Terminator progeny consistent safe and with weight.**PURCHASER:****\$****SBM**
+\$156**NBT**
+\$115

25

MORGANVALE THUNDER T140 (PP) WLM T140

Date of Birth 20/05/2022

MSU TCF REVOLUTION 4R (IMP USA) (PP)
 KCF BENNETT REVOLUTION X51 (IMP USA) (P)
 KCF MISS PROFICIENT U201 (P)

KOANUI TECHNO 3062 (IMP NZL) (PP)
 YAVENVALE MILESTONE M397 (AI) (PP)
 YAVENVALE RUBY J472 (AI) (P)

SIRE: WIRRUNA NATIONAL N322 (AI) (PP)**DAM: MORGANVALE ALMOND Q066 (P)**

MATARIKI HOLY - SMOKE (IMP NZL) (P)
 WIRRUNA DOREEN J56 (AI) (P)
 WIRRUNA DOREEN G327 (P)

MORGANVALE FILLMORE (PP)
 MORGANVALE ALMOND L104 (P)
 MORGANVALE ALMOND F69 (P)

DECEMBER 2023 GROUP BREEDPLAN EBVS

	CED DIR	CED DTRS	GL	BIRTH WT	200 WT	400 WT	600 WT	MCW	MARKET INDEX VALUES	
EBV	+6.3	+6.2	-1.0	+4.4	+42	+68	+91	+79		SSR +\$186
ACC%	45%	37%	63%	74%	69%	69%	71%	63%		
	MILK	SCROTAL	CWT	EMA	RIB FAT	RUMP FAT	RBY%	IMF%	NSR +\$181	
EBV	+19	+0.6	+71	+9.1	+1.2	+1.3	+1.9	+1.9		
ACC%	59%	77%	59%	51%	54%	58%	52%	55%		
EYE PIGMENTATION: 100/100					SCROTAL CIRCUMFERENCE: 40					SBM +\$201
NOTES: Thunder has high weight gain to compliment his high carcase values. Top 1% EMA, Top 5% IMF, Top 10% for all 4 \$ indexes.										
PURCHASER:					\$					NBT +\$153

26

MORGANVALE THEO T307 (PP) WLM T307

Date of Birth 18/09/2022

WIRRUNA FORT F382 (ET) (PP)
 WIRRUNA HOT STUFF H356 (P)
 WIRRUNA GOLDEN VANITY F378 (ET) (P)

YAVENVALE GURU G031 (PP)
 REDGATE RULER L301 (AI) (PP)
 REDGATE REGINA F807 (AI) (P)

SIRE: MORGANVALE QUASH Q289 (PP)**DAM: MORGANVALE JANIE P120 (P)**

BRAYBOOK GUNSHOT G480 (AI) (P)
 MORGANVALE STATUESQUE M050 (P)
 MORGANVALE STATUESQUE F232 (P)

MORGANVALE FLYNN (AI) (P)
 MORGANVALE JANIE K207 (P)
 MORGANVALE JANIE G89 (P)

DECEMBER 2023 GROUP BREEDPLAN EBVS

	CED DIR	CED DTRS	GL	BIRTH WT	200 WT	400 WT	600 WT	MCW	MARKET INDEX VALUES	
EBV	+0.5	+0.5	-2.0	+6.3	+51	+85	+118	+105		SSR +\$184
ACC%	41%	32%	55%	72%	67%	64%	64%	55%		
	MILK	SCROTAL	CWT	EMA	RIB FAT	RUMP FAT	RBY%	IMF%	NSR +\$169	
EBV	+19	+1.6	+82	+5.9	-0.1	+0.0	+2.3	+0.4		
ACC%	52%	72%	51%	44%	47%	51%	44%	48%		
EYE PIGMENTATION: 100/100					SCROTAL CIRCUMFERENCE: 36					SBM +\$190
NOTES: One of the younger bulls in the draft, Theo has high growth and carcase values. Top 1% 200, 400 day. Top 5% 600 day. Top 10% EMA, RBY, SSR.										
PURCHASER:					\$					NBT +\$143

29

MORGANVALE TEAGUE T289 (PP) WLM T289

Date of Birth 29/07/2022

MSU TCF REVOLUTION 4R (IMP USA) (PP)
 KCF BENNETT REVOLUTION X51 (IMP USA) (P)
 KCF MISS PROFICIENT U201 (P)

KOANUI TECHNO 3062 (IMP NZL) (PP)
 YAVENVALE MILESTONE M397 (AI) (PP)
 YAVENVALE RUBY J472 (AI) (P)

SIRE: WIRRUNA NATIONAL N322 (AI) (PP)**DAM: MORGANVALE LYDIA Q26 (P)**

MATARIKI HOLY - SMOKE (IMP NZL) (P)
 WIRRUNA DOREEN J56 (AI) (P)
 WIRRUNA DOREEN G327 (P)

MORGANVALE FILLMORE (PP)
 MORGANVALE LYDIA J138 (P)
 MORGANVALE LYDIA B142 (P)

DECEMBER 2023 GROUP BREEDPLAN EBVS

	CED DIR	CED DTRS	GL	BIRTH WT	200 WT	400 WT	600 WT	MCW	MARKET INDEX VALUES	
EBV	+3.1	+4.5	-2.6	+4.1	+44	+66	+90	+66		
ACC%	45%	37%	64%	73%	69%	68%	68%	61%		
	MILK	SCROTAL	CWT	EMA	RIB FAT	RUMP FAT	RBY%	IMF%	SSR	
EBV	+20	+2.8	+69	+8.3	+0.3	+0.1	+2.8	+1.8	+\$189	
ACC%	59%	77%	56%	50%	53%	57%	51%	55%	NSR	
EYE PIGMENTATION: 98/100									SCROTAL CIRCUMFERENCE: 44	+\$184
NOTES: A real curve bender with high maternal and carcase values, the RBY & IMF ratio is hard to achieve. Top 1% EMA & IMF, Top 5% IMF, Top 10% for all 4 \$ indexes.										
PURCHASER:										+\$193
										+\$141

30

MORGANVALE TIDDLEY T147 (PP) WLM T147

Date of Birth 21/05/2022

NITHDALE JACKAL 090029 (P)
 ORARI GORGE MISCHIEF 120083 (IMP NZL) (P)
 NITHDALE LESLIE 090020 (P)

WIRRUNA KALIMNA K326 (PP)
 YAVENVALE NIAGARA N285 (AI) (PP)
 YAVENVALE LADY MARY L482 (AI) (P)

SIRE: WIRRUNA QANIT Q069 (AI) (PP)**DAM: MORGANVALE JANIE R142 (P)**

KCF BENNETT REVOLUTION X51 (IMP USA) (P)
 WIRRUNA MADAM L14 (ET) (PP)
 WIRRUNA MADAM F18 (AI) (P)

ALLENDALE ANZAC H175 (ET) (PP)
 MORGANVALE JANIE M305 (P)
 MORGANVALE JANIE G55 (P)

DECEMBER 2023 GROUP BREEDPLAN EBVS

	CED DIR	CED DTRS	GL	BIRTH WT	200 WT	400 WT	600 WT	MCW	MARKET INDEX VALUES	
EBV	+8.3	+3.2	-2.4	+2.0	+39	+65	+88	+54		
ACC%	41%	32%	58%	72%	67%	66%	68%	58%		
	MILK	SCROTAL	CWT	EMA	RIB FAT	RUMP FAT	RBY%	IMF%	SSR	
EBV	+25	+3.6	+65	+5.4	+3.1	+4.6	+0.1	+1.2	+\$204	
ACC%	52%	75%	54%	46%	48%	52%	46%	48%	NSR	
EYE PIGMENTATION: 100/98									SCROTAL CIRCUMFERENCE: 44	+\$198
NOTES: Tidley is from a 2 year old heifer as are all the Qanit calves. Tidley who from a low bwt has really powered on offers a real chance to combine calving ease, maternal and high carcase values. Top 1% Rib and Rump, Top 5% milk and SS, SSR, SBM, NBT. Would suit heifer joining (H).										
PURCHASER:										+\$208
										+\$149

31

MORGANVALE TIDWORTH T188 (PP) WLM T188

Date of Birth 30/05/2022

MORGANVALE FILLMORE (P)
 MORGANVALE LARKIN (PP)
 MORGANVALE STATUESQUE G343 (P)

ALLENDALE WATERHOUSE D1 (PP)
 DAYS FABULOUS K173 (PP)
 DAYS DAWN F120 (P)
DAM: MORGANVALE JANIE P282 (P)
 WIRRUNA COMMANDER C68 (AI) (PP)
 MORGANVALE JANIE F117 (AI) (P)
 MORGANVALE JANIE B153 (P)

SIRE: MORGANVALE PALMER (AI) (PP)

CLOVERLEE HOTSHOT (P)
 MORGANVALE LADY ALMOND K209 (P)
 MORGANVALE LADY ALMOND G209 (P)

DECEMBER 2023 GROUP BREEDPLAN EBVS

	CED DIR	CED DTRS	GL	BIRTH WT	200 WT	400 WT	600 WT	MCW	MARKET INDEX VALUES
EBV	+4.6	+5.3	-3.3	+6.3	+45	+77	+116	+98	
ACC%	40%	31%	58%	73%	68%	67%	70%	59%	
	MILK	SCROTAL	CWT	EMA	RIB FAT	RUMP FAT	RBV%	IMF%	SSR
EBV	+18	+3.1	+75	+4.9	-0.5	-0.7	+2.6	+0.0	+\$199
ACC%	54%	76%	56%	47%	50%	54%	48%	49%	NSR
EYE PIGMENTATION: 100/100 SCROTAL CIRCUMFERENCE: 42									+\$182
NOTES: A free moving son of Palmer with a deep cherry coat who is one of the highest weight gaining bulls. Top 5% 200, 400, 600 day, SSR, SBM & NBT.									SBM +\$213
PURCHASER:									NBT +\$152
									\$

32

MORGANVALE TEMPO T309 (PP) WLM T309

Date of Birth 08/08/2022

WIRRUNA HARTWIG H297 (P)
 WIRRUNA KALIMNA K326 (PP)
 WIRRUNA CORA H303 (AI) (ET) (P)

VALMA MAGNUM II (PP)
 YALGOO BUSKER H243 (PP)
 YALGOO BETTE W050 (AI) (P)
DAM: MORGANVALE NATALIE L259 (P)
 MORGANVALE CYRIL (P)
 MORGANVALE LADY NATALIE F154 (P)
 MORGANVALE LADY NATALIE Y105 (P)

SIRE: YAVENVALE NIAGARA N285 (AI) (PP)

YALGOO JET J157 (AI) (P)
 YAVENVALE LADY MARY L482 (AI) (P)
 YAVENVALE LADY MARY D124 (P)

DECEMBER 2023 GROUP BREEDPLAN EBVS

	CED DIR	CED DTRS	GL	BIRTH WT	200 WT	400 WT	600 WT	MCW	MARKET INDEX VALUES
EBV	+4.3	+3.8	+0.0	+5.3	+41	+68	+91	+78	
ACC%	46%	38%	56%	73%	69%	68%	66%	59%	
	MILK	SCROTAL	CWT	EMA	RIB FAT	RUMP FAT	RBV%	IMF%	SSR
EBV	+17	+3.0	+62	+8.0	+0.2	-0.1	+2.6	+1.0	+\$181
ACC%	57%	76%	56%	49%	52%	56%	50%	51%	NSR
EYE PIGMENTATION: 100/100 SCROTAL CIRCUMFERENCE: 42									+\$174
NOTES: A younger sire who has curve bending growth and high carcase merit. Top 1% EMA, Top 15% SS, SSR, NSR, SBM.									SBM +\$186
PURCHASER:									NBT +\$138
									\$

33

MORGANVALE TETTE T97 (PP) WLM T097

Date of Birth 10/05/2022

SOUTH BUKALONG WALLACE 2 (P)

MOUNT DIFFICULT HACKETT H16 (AI) (P)

MOUNT DIFFICULT HARMONY E121 (P)

SIRE: MOUNT DIFFICULT KEARNEY K18 (PP)

OTAPAWA SPARK 3060 (IMP NZL) (AI) (ET) (P)

MOUNT DIFFICULT VENUS H55 (AI) (P)

MOUNT DIFFICULT VENUS A153 (TW) (P)

INJEMIRA ANZAC H006 (PP)

INJEMIRA ANZAC H006 M164 AI (AI) (PP)

INJEMIRA DOMINO LASS G041 (P)

DAM: MORGANVALE NATALIE Q402 (P)

MORGANVALE SPARK G4 (AI) (P)

MORGANVALE NATALIE L77 (P)

MORGANVALE LADY NATALIE F142 (P)

DECEMBER 2023 GROUP BREEDPLAN EBVS

	CED DIR	CED DTRS	GL	BIRTH WT	200 WT	400 WT	600 WT	MCW	MARKET INDEX VALUES
EBV	+6.3	+3.2	-2.9	+8.6	+54	+89	+120	+120	
ACC%	47%	38%	61%	73%	68%	68%	70%	62%	
	MILK	SCROTAL	CWT	EMA	RIB FAT	RUMP FAT	RBY%	IMF%	SSR
EBV	+21	+3.9	+76	+3.2	-0.8	-1.6	+1.9	-0.4	+\$189
ACC%	59%	77%	58%	50%	53%	57%	51%	53%	NSR

EYE PIGMENTATION: **100/100**SCROTAL CIRCUMFERENCE: **46**

NOTES: Tette is a dark high growth, well-shaped bull with high maternal values. Top 1% 200, 400, 600 day EBVs. Top 5% SS, Top 10% SSR, SBM & NBT.

PURCHASER:**\$****+\$189****NSR**
+\$202**NBT**
+\$153

34

MORGANVALE TARRAGON T119 (PP) WLM T119

Date of Birth 15/05/2022

MORGANVALE FILLMORE (PP)

MORGANVALE LARKIN (PP)

MORGANVALE STATUESQUE G343 (P)

SIRE: MORGANVALE PALMER (AI) (PP)

CLOVERLEE HOTSHOT (P)

MORGANVALE LADY ALMOND K209 (P)

MORGANVALE LADY ALMOND G209 (P)

OTAPAWA SPARK 3060 (IMP NZL) (AI) (ET) (P)

BRAYBOOK GUNSHOT G480 (AI) (P)

WIRANYA PETAL X35 (P)

DAM: MORGANVALE NATALIE M076 (P)

MORGANVALE CAPTAIN C196 (P)

MORGANVALE LADY NATALIE F264 (P)

MORGANVALE LYDIA D95 (P)

DECEMBER 2023 GROUP BREEDPLAN EBVS

	CED DIR	CED DTRS	GL	BIRTH WT	200 WT	400 WT	600 WT	MCW	MARKET INDEX VALUES
EBV	+1.2	+5.2	-1.8	+3.1	+31	+54	+71	+49	
ACC%	41%	30%	57%	74%	69%	68%	70%	60%	
	MILK	SCROTAL	CWT	EMA	RIB FAT	RUMP FAT	RBY%	IMF%	SSR
EBV	+12	+2.7	+51	+5.1	+3.2	+4.8	-0.2	+1.2	+\$156
ACC%	55%	77%	56%	47%	50%	55%	48%	48%	NSR

EYE PIGMENTATION: **98/100**SCROTAL CIRCUMFERENCE: **38**

NOTES: Tarragon is a proud up standing sire with good length of spine and a soft dark coat that his sire Palmer is leaving in his progeny.

PURCHASER:**\$****+\$156****NSR**
+\$148**NBT**
+\$98

35

MORGANVALE TRICKETT T181 (PP) WLM T181

Date of Birth 28/05/2022

ALLENDALE ANZAC E114 (PP)
 WIRRUNA LEDGER L285 (AI) (PP)
 WIRRUNA DOREEN G115 (AI) (P)

SIRE: WIRRUNA PERRY P150 (AI) (PP)

WIRRUNA JUST J181 (AI) (P)
 WIRRUNA DOREEN L544 (PP)
 WIRRUNA DOREEN G124 (AI) (P)

WIRRUNA FORT F382 (ET) (PP)
 WIRRUNA HOT STUFF H356 (P)
 WIRRUNA GOLDEN VANITY F378 (ET) (P)

DAM: MORGANVALE HYACINTH P323 (P)

BRAYBOOK GUNSHOT G480 (AI) (P)
 MORGANVALE HYACINTH L128 (P)
 MORGANVALE HYACINTH G254 (P)

DECEMBER 2023 GROUP BREEDPLAN EBVS

	CED DIR	CED DTRS	GL	BIRTH WT	200 WT	400 WT	600 WT	MCW	MARKET INDEX VALUES	
EBV	-1.7	+3.3	-1.2	+6.1	+40	+63	+87	+72		
ACC%	43%	35%	61%	74%	68%	68%	70%	61%		
	MILK	SCROTAL	CWT	EMA	RIB FAT	RUMP FAT	RBY%	IMF%	SSR	
EBV	+15	+4.7	+57	+6.7	+0.6	+0.7	+1.4	+2.1	+\$166	
ACC%	56%	77%	57%	49%	52%	56%	49%	52%	NSR	
EYE PIGMENTATION: 100/100					SCROTAL CIRCUMFERENCE: 45					+\$155
NOTES: Typical of his sire Trickett has good maternal values with high carcass data EBVs.										
Top 1% SS, Top 5% EMA & IMF.										
PURCHASER:									+\$108	
									\$	

36

MORGANVALE TURF T79 (PP) WLM T079

Date of Birth 06/05/2022

KCF BENNETT ENCORE Z311 (ET) (PP)
 NJW 79Z Z311 ENDURE 173D (IMP USA) (ET) (PP)
 BW 91H 100W RITA 79Z (ET) (P)

SIRE: MAWARRA TERMINATOR Q274 (AI) (PP)

CLOVERLEE HUNTER (PP)
 MAWARRA MISS TITANIA 054 (AI) (ET) (P)
 MAWARRA MISS TITANIA 023 (AI) (P)

WIRRUNA FORT F382 (ET) (PP)
 WIRRUNA HOT STUFF H356 (P)
 WIRRUNA GOLDEN VANITY F378 (ET) (P)

DAM: MORGANVALE KRISTLE M189 (P)

MORGANVALE ALLIANCE G294 (AI) (P)
 MORGANVALE KRISTLE K317 (P)
 MORGANVALE KRISTLE D60 (P)

DECEMBER 2023 GROUP BREEDPLAN EBVS

	CED DIR	CED DTRS	GL	BIRTH WT	200 WT	400 WT	600 WT	MCW	MARKET INDEX VALUES	
EBV	+3.1	+3.1	-0.4	+4.7	+40	+57	+71	+44		
ACC%	47%	39%	59%	74%	69%	69%	71%	63%		
	MILK	SCROTAL	CWT	EMA	RIB FAT	RUMP FAT	RBY%	IMF%	SSR	
EBV	+15	+1.0	+52	+8.3	+1.5	+1.9	+1.6	+1.9	+\$161	
ACC%	57%	77%	59%	51%	54%	58%	52%	53%	NSR	
EYE PIGMENTATION: 100/100					SCROTAL CIRCUMFERENCE: 39					+\$160
NOTES: Turf is a solid performer with good carcass and positive finishing ability.										
PURCHASER:									+\$117	
									\$	

37

MORGANVALE THURLOW T141 (PP) WLM T141

Date of Birth 20/05/2022

ALLENDALE ANZAC E114 (PP)
 WIRRUNA LEDGER L285 (AI) (P)
 WIRRUNA DOREEN G115 (AI) (P)

SIRE: WIRRUNA PERRY P150 (AI) (PP)

WIRRUNA JUST J181 (AI) (P)
 WIRRUNA DOREEN L544 (PP)
 WIRRUNA DOREEN G124 (AI) (P)

WIRRUNA FORT F382 (ET) (PP)
 WIRRUNA HOT STUFF H356 (P)
 WIRRUNA GOLDEN VANITY F378 (ET) (P)

DAM: MORGANVALE SILVERMINE Q144 (P)

MORGANVALE SPARK G4 (AI) (PP)
 MORGANVALE SILVERMINE L171 (P)
 MORGANVALE SILVERMINE G28 (P)

DECEMBER 2023 GROUP BREEDPLAN EBVS

	CED DIR	CED DTRS	GL	BIRTH WT	200 WT	400 WT	600 WT	MCW	MARKET INDEX VALUES
EBV	+5.2	+5.0	-4.3	+2.9	+36	+54	+67	+41	
ACC%	43%	35%	60%	74%	68%	67%	70%	61%	
	MILK	SCROTAL	CWT	EMA	RIB FAT	RUMP FAT	RBV%	IMF%	SSR
EBV	+23	+3.8	+52	+4.9	+1.4	+2.1	-0.2	+2.4	+\$160
ACC%	56%	77%	57%	48%	51%	55%	49%	51%	NSR
EYE PIGMENTATION: 100/100								SCROTAL CIRCUMFERENCE: 42	+\$148
NOTES: High maternal and carcase values make Thurlow a versatile option. Top 5% GL, SS & IMF.									
Top 10% Milk.									
PURCHASER:									SBM
									+\$161
									NBT
									+\$116

38

MORGANVALE TATTOO T110 (PP) WLM T110

Date of Birth 13/05/2022

WIRRUNA HARTWIG H297 (P)
 WIRRUNA KALIMNA K326 (PP)
 WIRRUNA CORA H303 (AI) (ET) (P)

SIRE: YAVENVALE NIAGARA N285 (AI) (PP)

YALGOO JET J157 (AI) (P)
 YAVENVALE LADY MARY L482 (AI) (P)
 YAVENVALE LADY MARY D124 (P)

MOUNT DIFFICULT HACKETT H16 (AI) (P)
 MOUNT DIFFICULT KEARNEY K18 (PP)
 MOUNT DIFFICULT VENUS H55 (AI) (P)

DAM: MORGANVALE SHAMROCK O6 (P)

MORGANVALE HAMPTON (PP)
 MORGANVALE SHAMROCK M280 (P)
 MORGANVALE SHAMROCK H207 (P)

DECEMBER 2023 GROUP BREEDPLAN EBVS

	CED DIR	CED DTRS	GL	BIRTH WT	200 WT	400 WT	600 WT	MCW	MARKET INDEX VALUES
EBV	+8.0	+4.5	-2.5	+3.8	+41	+70	+92	+67	
ACC%	44%	35%	59%	74%	69%	69%	71%	61%	
	MILK	SCROTAL	CWT	EMA	RIB FAT	RUMP FAT	RBV%	IMF%	SSR
EBV	+27	+2.6	+72	+5.3	+0.8	+0.7	+1.1	+0.9	+\$181
ACC%	57%	77%	58%	50%	53%	57%	50%	52%	NSR
EYE PIGMENTATION: 100/100								SCROTAL CIRCUMFERENCE: 43	+\$163
NOTES: Tattoo from a lower BWT has curve bending growth, high maternal and carcase data EBVs.									
Top 5% Milk, Top 15% EMA & SSR.									
PURCHASER:									SBM
									+\$197
									NBT
									+\$146

39

MORGANVALE TUG T41 (PP) WLM T041

Date of Birth 21/04/2022

SOUTH BUKALONG WALLACE 2 (P)
 MOUNT DIFFICULT HACKETT H16 (AI) (P)
 MOUNT DIFFICULT HARMONY E121 (P)

WIRRUNA FLETCHER F214 (P)
 WIRRUNA MELVILLE M243 (AI) (ET) (TW) (P)
 WIRRUNA CORA D9 (AI) (P)

SIRE: MOUNT DIFFICULT KEARNEY K18 (PP)**DAM: MORGANVALE HYACINTH Q303 (P)**

OTAPAWA SPARK 3060 (IMP NZL) (AI) (ET) (P)
 MOUNT DIFFICULT VENUS H55 (AI) (P)
 MOUNT DIFFICULT VENUS A153 (TW) (P)

BRAYBOOK GUNSHOT G480 (AI) (P)
 MORGANVALE HYACINTH L128 (P)
 MORGANVALE HYACINTH G254 (P)

DECEMBER 2023 GROUP BREEDPLAN EBVS

	CED DIR	CED DTRS	GL	BIRTH WT	200 WT	400 WT	600 WT	MCW	MARKET INDEX VALUES
EBV	+10.0	+6.9	-1.8	+1.4	+29	+50	+61	+39	
ACC%	48%	39%	60%	73%	69%	68%	71%	62%	
	MILK	SCROTAL	CWT	EMA	RIB FAT	RUMP FAT	RBY%	IMF%	SSR
EBV	+19	+2.8	+53	+4.4	+2.7	+3.7	-1.0	+1.4	+\$151
ACC%	60%	77%	58%	50%	53%	57%	51%	53%	NSR
EYE PIGMENTATION: 100/80									SCROTAL CIRCUMFERENCE: 42
NOTES: Tug is a low BWT sire with calving ease and positive fats to enhance daughter fertility. Top 1% Rib, Top 5% Rump EBVs. Would suit heifer joining (H).									+\$145
PURCHASER:									SBM
									+\$166
									NBT
									+\$120

40

MORGANVALE TITANIC T338 (P) WLM T338

Date of Birth 21/08/2022

KCF BENNETT ENCORE Z311 (ET) (PP)
 NJW 79Z Z311 ENDURE 173D (IMP USA) (ET) (PP)
 BW 91H 100W RITA 79Z (ET) (P)

ALLENDALE WATERHOUSE D1 (PP)
 DAYS CALIBRE G74 (PP)
 ALLENDALE DAWN C62 (AI) (P)

SIRE: MAWARRA TERMINATOR Q274 (AI) (PP)**DAM: MORGANVALE DORREEN K205 (AI) (P)**

CLOVERLEE HUNTER (PP)
 MAWARRA MISS TITANIA 054 (AI) (ET) (P)
 MAWARRA MISS TITANIA 023 (AI) (P)

HEATHERDALE OPIUM U78 (AI) (P)
 MORGANVALE DORREEN C75 (P)
 MORGANVALE DOREEN A56 (P)

DECEMBER 2023 GROUP BREEDPLAN EBVS

	CED DIR	CED DTRS	GL	BIRTH WT	200 WT	400 WT	600 WT	MCW	MARKET INDEX VALUES
EBV	+2.3	+6.0	+2.7	+5.6	+40	+63	+87	+80	
ACC%	48%	37%	63%	74%	69%	69%	67%	59%	
	MILK	SCROTAL	CWT	EMA	RIB FAT	RUMP FAT	RBY%	IMF%	SSR
EBV	+17	+1.1	+57	+5.7	+0.4	+0.3	+1.2	+1.1	+\$145
ACC%	52%	77%	57%	52%	54%	58%	52%	52%	NSR
EYE PIGMENTATION: 100/100									SCROTAL CIRCUMFERENCE: 40
NOTES: The next three lots all by Terminator are the youngest in the draft. Titanic is an impressive sire who will breed consistent lines of progeny.									+\$131
PURCHASER:									SBM
									+\$155
									NBT
									+\$115

41

MORGANVALE TROY T354 (P) WLM T354

Date of Birth 31/08/2022

KCF BENNETT ENCORE Z311 (ET) (PP)
 NJW 79Z Z311 ENDURE 173D (IMP USA) (ET) (PP)
 BW 91H 100W RITA 79Z (ET) (P)

SIRE: MAWARRA TERMINATOR Q274 (AI) (PP)

CLOVERLEE HUNTER (PP)
 MAWARRA MISS TITANIA 054 (AI) (ET) (P)
 MAWARRA MISS TITANIA 023 (AI) (P)

MORGANVALE CRAMPTON (PP)
 MORGANVALE FORSYTH (PP)
 MORGANVALE LADY ALMOND B310 (P)

DAM: MORGANVALE CORA L271 (P)

KIDMAN WHISKY X247 (P)
 MORGANVALE CORA E135 (P)
 MORGANVALE CORA B18 (AI) (P)

DECEMBER 2023 GROUP BREEDPLAN EBVS

	CED DIR	CED DTRS	GL	BIRTH WT	200 WT	400 WT	600 WT	MCW	MARKET INDEX VALUES
EBV	+2.2	+4.8	+2.2	+4.6	+37	+58	+85	+66	
ACC%	45%	33%	59%	74%	68%	68%	65%	57%	
	MILK	SCROTAL	CWT	EMA	RIB FAT	RUMP FAT	RBV%	IMF%	NSR +\$136
EBV	+16	+1.0	+58	+5.4	+1.9	+2.7	+0.2	+0.6	
ACC%	51%	76%	55%	48%	51%	54%	48%	49%	

EYE PIGMENTATION: **100/98**SCROTAL CIRCUMFERENCE: **38**

NOTES: All the Terminator sons are similar with a mid-maturity pattern weight and positive finishing ability. Top 10% Rib & Rump EBVs.

PURCHASER:**\$**

NBT
+\$106

42

MORGANVALE TILLEY T358 (P) WLM T358

Date of Birth 01/09/2022

KCF BENNETT ENCORE Z311 (ET) (PP)
 NJW 79Z Z311 ENDURE 173D (IMP USA) (ET) (PP)
 BW 91H 100W RITA 79Z (ET) (P)

SIRE: MAWARRA TERMINATOR Q274 (AI) (PP)

CLOVERLEE HUNTER (PP)
 MAWARRA MISS TITANIA 054 (AI) (ET) (P)
 MAWARRA MISS TITANIA 023 (AI) (P)

DEBARRY CALGARY C58 (P)
 ALLENDALE ANZAC H175 (ET) (PP)
 ALLENDALE DAWN B22 (AI) (ET) (P)

DAM: MORGANVALE MARTHA L175 (TW) (P)

MORGANVALE CAPTAIN C196 (P)
 MORGANVALE MARTHA F30 (P)
 MORGANVALE MARTHA D164 (P)

DECEMBER 2023 GROUP BREEDPLAN EBVS

	CED DIR	CED DTRS	GL	BIRTH WT	200 WT	400 WT	600 WT	MCW	MARKET INDEX VALUES
EBV	+1.5	+4.8	+2.1	+4.9	+36	+58	+80	+72	
ACC%	45%	33%	59%	73%	68%	67%	65%	56%	
	MILK	SCROTAL	CWT	EMA	RIB FAT	RUMP FAT	RBV%	IMF%	NSR +\$119
EBV	+19	+3.1	+51	+3.8	+1.7	+2.3	-0.4	+0.9	
ACC%	50%	76%	54%	48%	50%	54%	48%	48%	

EYE PIGMENTATION: **100/100**SCROTAL CIRCUMFERENCE: **40**

NOTES: Youngest sire of the sale and good all round potential.

PURCHASER:**\$**

NBT
+\$97

43

MORGANVALE YRAINEE T195 (P) WLM T195

Date of Birth 31/05/2022

WIRRUNA HARTWIG H297 (P)
 WIRRUNA KALIMNA K326 (PP)
 WIRRUNA CORA H303 (AI) (ET) (P)

SIRE: YAVENVALE NIAGARA N285 (AI) (PP)

YALGOO JET J157 (AI) (P)
 YAVENVALE LADY MARY L482 (AI) (P)
 YAVENVALE LADY MARY D124 (P)

MOUNT DIFFICULT HACKETT H16 (AI) (P)
 MOUNT DIFFICULT KEARNEY K18 (PP)
 MOUNT DIFFICULT VENUS H55 (AI) (P)
DAM: MORGANVALE ALMOND N166 (P)
 MORGANVALE FLYNN (AI) (P)
 MORGANVALE ALMOND L105 (P)
 MORGANVALE LADY ALMOND G172 (AI) (P)

DECEMBER 2023 GROUP BREEDPLAN EBVS

	CED DIR	CED DTRS	GL	BIRTH WT	200 WT	400 WT	600 WT	MCW	MARKET INDEX VALUES
EBV	+4.0	+3.8	-2.2	+5.4	+40	+60	+83	+54	
ACC%	45%	36%	53%	74%	69%	68%	70%	61%	+\$178
	MILK	SCROTAL	CWT	EMA	RIB FAT	RUMP FAT	RBV%	IMF%	SSR
EBV	+21	+3.8	+57	+5.2	+1.8	+2.2	+1.1	+0.7	
ACC%	56%	77%	58%	50%	53%	56%	49%	49%	+\$167

EYE PIGMENTATION: **100/100**SCROTAL CIRCUMFERENCE: **40****NOTES:** A curve bending growth bull with profit making maternal and carcass traits.**PURCHASER:****\$**

44

MORGANVALE TENOR T122 (P) WLM T122

Date of Birth 16/05/2022

WIRRUNA HARTWIG H297 (P)
 WIRRUNA KALIMNA K326 (PP)
 WIRRUNA CORA H303 (AI) (ET) (P)

SIRE: YAVENVALE NIAGARA N285 (AI) (PP)

YALGOO JET J157 (AI) (P)
 YAVENVALE LADY MARY L482 (AI) (P)
 YAVENVALE LADY MARY D124 (P)

NJW 73S W18 HOMETOWN 10Y (IMP USA) (P)
 GLENDAN PARK LAMBERT L055 (AI) (ET) (PP)
 GLENDAN PARK ALMOND JOY D098 (P)
DAM: MORGANVALE MARGOT P229 (P)
 BRAYBOOK GUNSHOT G480 (AI) (P)
 MORGANVALE MARGOT L88 (P)
 MORGANVALE MARGOT H73 (P)

DECEMBER 2023 GROUP BREEDPLAN EBVS

	CED DIR	CED DTRS	GL	BIRTH WT	200 WT	400 WT	600 WT	MCW	MARKET INDEX VALUES
EBV	+2.2	+2.6	-1.2	+4.4	+38	+60	+82	+58	
ACC%	43%	34%	51%	74%	69%	68%	70%	60%	+\$158
	MILK	SCROTAL	CWT	EMA	RIB FAT	RUMP FAT	RBV%	IMF%	SSR
EBV	+26	+3.4	+56	+5.8	+0.6	-0.1	+1.8	+1.0	
ACC%	54%	77%	57%	49%	52%	56%	49%	48%	+\$141

EYE PIGMENTATION: **100/100**SCROTAL CIRCUMFERENCE: **44****NOTES:** By the same sire as the previous lot and has all the curve bending growth, high maternal and carcass Niagra has left. Top 5% Milk.**PURCHASER:****\$**

45

MORGANVALE TREMAINE T230 (P) WLM T230

Date of Birth 17/06/2022

MORGANVALE FILLMORE (PP)

MORGANVALE LARKIN (PP)

MORGANVALE STATUESQUE G343 (P)

SIRE: MORGANVALE PALMER (AI) (PP)

CLOVERLEE HOTSHOT (P)

MORGANVALE LADY ALMOND K209 (P)

MORGANVALE LADY ALMOND G209 (P)

WIRRUNA FORT F382 (ET) (PP)

WIRRUNA HOT STUFF H356 (P)

WIRRUNA GOLDEN VANITY F378 (ET) (P)

DAM: MORGANVALE GEM (P)

MORGANVALE ALLIANCE G294 (AI) (P)

MORGANVALE GEM K181 (P)

MORGANVALE GEM B129 (P)

DECEMBER 2023 GROUP BREEDPLAN EBVS

	CED DIR	CED DTRS	GL	BIRTH WT	200 WT	400 WT	600 WT	MCW	MARKET INDEX VALUES	
EBV	-0.1	+1.7	-3.0	+5.6	+41	+62	+86	+60		SSR
ACC%	42%	32%	52%	73%	68%	68%	70%	60%	+\$155	
	MILK	SCROTAL	CWT	EMA	RIB FAT	RUMP FAT	RB%Y	IMF%	NSR	
EBV	+13	+1.0	+59	+5.4	+0.6	+0.6	+2.2	+0.6		+\$146
ACC%	52%	76%	56%	47%	50%	54%	48%	47%	NSR	
EYE PIGMENTATION: 100/100					SCROTAL CIRCUMFERENCE: 40					+\$146
NOTES: A safe dark coated son of Palmer with balance and carcass. Top 15% GL, EMA.										
									SBM	
									+\$155	
									NBT	
									+\$107	
PURCHASER:						\$				

46

MORGANVALE TUDOR T76 (PP) WLM T076

Date of Birth 05/05/2022

DAYS CALIBRE G74 (PP)

MORGANVALE CALIBRE K233 (AI) (PP)

MORGANVALE KRYSTLE G86 (AI) (P)

SIRE: MORGANVALE NAVAL (PP)

REDGATE RAMSAY D415 (AI) (ET) (PP)

MORGANVALE CORA H205 (P)

MORGANVALE CORA F52 (P)

ALLENDALE WATERHOUSE D1 (PP)

DAYS FABULOUS K173 (PP)

DAYS DAWN F120 (P)

DAM: MORGANVALE JANIE N213 (P)

WIRRUNA COMMANDER C68 (AI) (PP)

MORGANVALE JANIE F117 (AI) (P)

MORGANVALE JANIE B153 (P)

DECEMBER 2023 GROUP BREEDPLAN EBVS

	CED DIR	CED DTRS	GL	BIRTH WT	200 WT	400 WT	600 WT	MCW	MARKET INDEX VALUES	
EBV	+7.0	+5.6	-1.7	+2.2	+24	+40	+58	+43		SSR
ACC%	42%	33%	55%	74%	69%	68%	70%	60%	+\$135	
	MILK	SCROTAL	CWT	EMA	RIB FAT	RUMP FAT	RB%Y	IMF%	NSR	
EBV	+19	+3.0	+40	+6.4	+1.3	+2.3	+1.3	+0.9		+\$134
ACC%	56%	77%	56%	48%	50%	55%	48%	49%	NSR	
EYE PIGMENTATION: 100/100					SCROTAL CIRCUMFERENCE: 44					+\$134
NOTES: Naval progeny are highly maternal with good carcass values. Top 5% EMA, Top 15% SS & Rump.										
									SBM	
									+\$149	
									NBT	
									+\$109	
PURCHASER:						\$				

49

MORGANVALE TEMPEST T30 (PP) WLM T030

Date of Birth 18/04/2022

NITHDALE JACKAL 090029 (P)
 ORARI GORGE MISCHIEF 120083 (IMP NZL) (P)
 NITHDALE LESLIE 090020 (P)

WIRRUNA KALIMNA K326 (PP)
 YAVENVALE NIAGARA N285 (AI) (PP)
 YAVENVALE LADY MARY L482 (AI) (P)

SIRE: WIRRUNA QANIT Q069 (AI) (PP)**DAM: MORGANVALE LYDIA R72 (P)**

KCF BENNETT REVOLUTION X51 (IMP USA) (P)
 WIRRUNA MADAM L14 (ET) (PP)
 WIRRUNA MADAM F18 (AI) (P)

MORGANVALE GIDEON G384 (PP)
 MORGANVALE LYDIA K301 (P)
 MORGANVALE LYDIA G118 (AI) (P)

DECEMBER 2023 GROUP BREEDPLAN EBVS

	CED DIR	CED DTRS	GL	BIRTH WT	200 WT	400 WT	600 WT	MCW	MARKET INDEX VALUES	
EBV	+8.7	+4.2	-3.2	+2.1	+26	+47	+56	+28		
ACC%	40%	32%	57%	72%	67%	66%	69%	58%		
	MILK	SCROTAL	CWT	EMA	RIB FAT	RUMP FAT	RBV%	IMF%	SSR	
EBV	+17	+3.9	+42	+6.9	+1.5	+1.6	+1.7	+1.1	+\$169	
ACC%	52%	75%	54%	46%	48%	52%	46%	48%	NSR	
EYE PIGMENTATION: 100/100									SCROTAL CIRCUMFERENCE: 42	+\$168
NOTES: Sired by Qanit, again all the comments of the previous lot apply. Note the short gestation length these genetics have. Would suit heifer joining (H). Top 5% EMA, Top 10% GL.										
PURCHASER:									\$	+\$170
									NBT	+\$120

50

MORGANVALE TRIGG T211 (PP) WLM T211

Date of Birth 04/06/2022

MSU TCF REVOLUTION 4R (IMP USA) (PP)
 KCF BENNETT REVOLUTION X51 (IMP USA) (P)
 KCF MISS PROFICIENT U201 (P)

MORGANVALE CRAMPTON (PP)
 MORGANVALE HAMPTON (PP)
 MORGANVALE MARTHA A73 (AI) (P)

SIRE: WIRRUNA NATIONAL N322 (AI) (PP)**DAM: MORGANVALE ALMOND JOY M115 (P)**

MATARIKI HOLY - SMOKE (IMP NZL) (P)
 WIRRUNA DOREEN J56 (AI) (P)
 WIRRUNA DOREEN G327 (P)

MORGANVALE DICKENS (P)
 MORGANVALE ALMOND JOY H369 (P)
 MORGANVALE ALMOND JOY B393 (P)

DECEMBER 2023 GROUP BREEDPLAN EBVS

	CED DIR	CED DTRS	GL	BIRTH WT	200 WT	400 WT	600 WT	MCW	MARKET INDEX VALUES	
EBV	+1.0	-0.2	+0.5	+8.7	+51	+90	+130	+126		
ACC%	46%	38%	63%	74%	69%	69%	71%	63%		
	MILK	SCROTAL	CWT	EMA	RIB FAT	RUMP FAT	RBV%	IMF%	SSR	
EBV	+20	+1.9	+84	+8.2	-0.6	-1.0	+3.4	+0.0	+\$196	
ACC%	59%	77%	58%	51%	54%	58%	51%	54%	NSR	
EYE PIGMENTATION: 100/100									SCROTAL CIRCUMFERENCE: 40	+\$175
NOTES: A growth & muscle sire with length and outlook. Top 1% 200, 400, 600 day, EMA, RBV. Top 5% SSR.										
PURCHASER:									\$	+\$203
									NBT	+\$154

51

MORGANVALE TILLEY T164 (PP) WLM T164

Date of Birth 24/05/2022

DAYS CALIBRE G74 (PP)
 MORGANVALE CALIBRE K233 (AI) (PP)
 MORGANVALE KRYSTLE G86 (AI) (P)

ALLENDALE WATERHOUSE D1 (PP)
 DAYS FABULOUS K173 (PP)
 DAYS DAWN F120 (P)

SIRE: MORGANVALE NAVAL (PP)**DAM: MORGANVALE LYDIA N276 (P)**

REDGATE RAMSAY D415 (AI) (ET) (PP)
 MORGANVALE CORA H205 (P)
 MORGANVALE CORA F52 (P)

MORGANVALE CRAMPTON (PP)
 MORGANVALE LYDIA F173 (P)
 MORGANVALE LYDIA C81 (AI) (P)

DECEMBER 2023 GROUP BREEDPLAN EBVS

	CED DIR	CED DTRS	GL	BIRTH WT	200 WT	400 WT	600 WT	MCW	MARKET INDEX VALUES	
EBV	+6.3	+5.2	-3.3	+3.9	+33	+48	+68	+51		SSR +\$128
ACC%	42%	33%	54%	74%	69%	67%	70%	59%		
	MILK	SCROTAL	CWT	EMA	RIB FAT	RUMP FAT	RBV%	IMF%	NSR +\$118	
EBV	+22	+2.0	+40	+4.5	+0.8	+1.1	+1.1	+0.7		
ACC%	55%	76%	56%	47%	49%	54%	47%	48%	NSR +\$118	
EYE PIGMENTATION: 100/100					SCROTAL CIRCUMFERENCE: 42					SBM +\$148
NOTES: Tilley is a free moving sire with a nice balance of data. Top 10% GL.										
PURCHASER:					\$					NBT +\$110

52

MORGANVALE TETRAS T271 (PP) WLM T271

Date of Birth 17/07/2022

NITHDALE JACKAL 090029 (P)
 ORARI GORGE MISCHIEF 120083 (IMP NZL) (P)
 NITHDALE LESLIE 090020 (P)

WIRRUNA FLETCHER F214 (P)
 WIRRUNA MELVILLE M243 (AI) (ET) (TW) (P)
 WIRRUNA CORA D9 (AI) (P)

SIRE: WIRRUNA QANIT Q069 (AI) (PP)**DAM: MORGANVALE MARGOT R17 (P)**

KCF BENNETT REVOLUTION X51 (IMP USA) (P)
 WIRRUNA MADAM L14 (ET) (PP)
 WIRRUNA MADAM F18 (AI) (P)

MONYMUSK GALLANT 110089 (IMP NZL) (P)
 MORGANVALE MARGOT P043 (AI) (P)
 MORGANVALE MARGOT K432 (P)

DECEMBER 2023 GROUP BREEDPLAN EBVS

	CED DIR	CED DTRS	GL	BIRTH WT	200 WT	400 WT	600 WT	MCW	MARKET INDEX VALUES	
EBV	+11.0	+6.4	-3.6	+1.5	+34	+46	+66	+31		SSR +\$182
ACC%	41%	33%	59%	71%	66%	65%	65%	57%		
	MILK	SCROTAL	CWT	EMA	RIB FAT	RUMP FAT	RBV%	IMF%	NSR +\$178	
EBV	+23	+3.6	+54	+6.4	+2.4	+2.6	+1.1	+1.5		
ACC%	51%	76%	52%	47%	50%	53%	47%	50%	NSR +\$178	
EYE PIGMENTATION: 100/100					SCROTAL CIRCUMFERENCE: 41					SBM +\$196
NOTES: Tetras is a good bull to complete the draft on, he has two heifer bulls close up in his pedigree which give him a strong data set on all the traits. Top 5% EMA & Rib. Top 10% CE, GL, SS, Rump & IMF. Would suit heifer joining (H).										
PURCHASER:					\$					NBT +\$139

BUYER'S INSTRUCTION SLIP

This slip must be completed by the purchaser and handed to the selling agent prior to leaving the sale. NO VERBAL instructions will be accepted.

Buyer

Address

State

Postcode

Contact Person

Phone

Fax

Mobile

Email

Transfer Requirements

HERD

LOTS PURCHASED	PRICE	CONSIGN TO

If you require transport from the vendor please draw a map indicating location of delivery on the back of this form.

Date

Signature

DELIVERY DETAILS

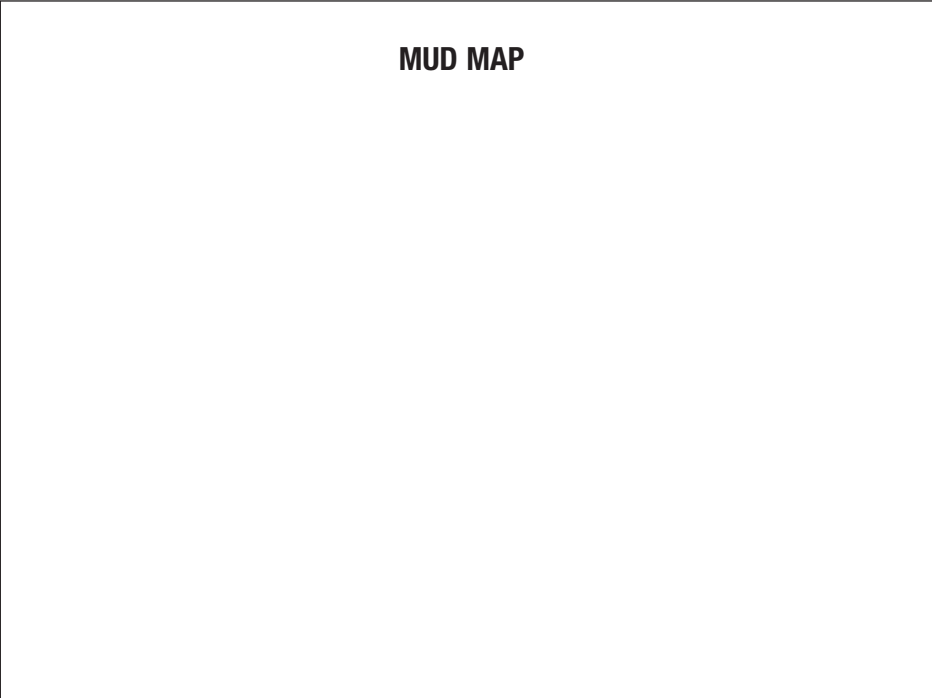
(PLEASE PRINT)

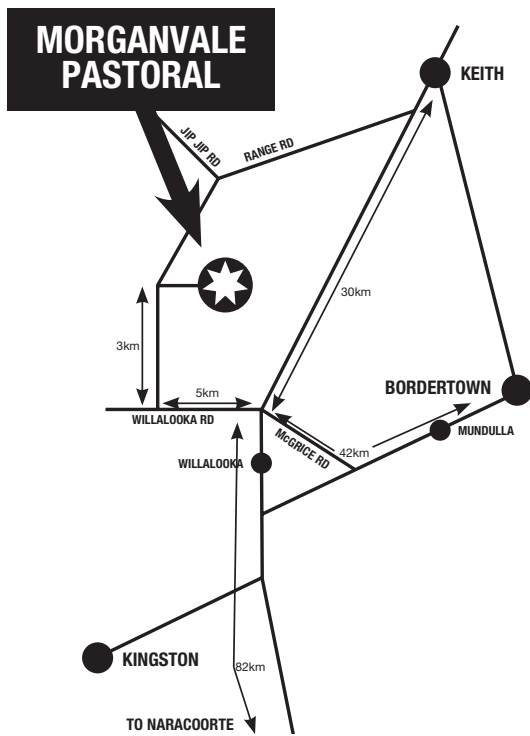
Lots Purchased

Contact Person

Phone

Mobile





SALE SUMMARY

OFFERED

SOLD

TOP PRICE

AVERAGE

GROSS

Allan & Heather would like to thank you all for attending, underbidders for your support and buyers for your confidence shown in our stock and breeding program.

We wish you success and hope you will join us for some refreshments after the sale.

Should any problems arise from your purchase we would like to be the first to know and will do whatever possible to assist.



LOT 2 MORGANVALE TARANTO Y93 (PP) WLM T093



LOT 3 MORGANVALE TENBY T55 (PP) WLM T055